

# Agenda



**Metro**

600 NE Grand Ave.  
Portland, OR 97232-2736

Meeting: Tryon Creek Cove trail master plan: Project Advisory Committee meeting no. 2  
Date: July 31, 2018  
Time: 2 to 4 p.m.  
Place: Room 270, Metro, 600 NE Grand, Portland  
Purpose: Continue planning process for Tryon Creek Cove trail master plan  
Outcome(s): Review evaluation criteria; initial evaluation of OR-43 crossing route alternatives; identify route alternatives for more detailed analysis

---

2 p.m.	Welcome and introductions	All
2:05 p.m.	Historic photos of the site and vicinity	Metro
2:10 p.m.	Public engagement update (social media, online survey)	Metro
2:25 p.m.	Summary of Open House no. 1 held on July 19	Metro/JLA
2:35 p.m.	BES treatment plant expansion and mitigation proposal for site/impacts on trail alignments	BES
2:55 p.m.	Four alternatives for crossing OR-43	Metro/ Parametrix
3:35 p.m.	Initial evaluation of bridge over Tryon Creek	Parametrix
3:45 p.m.	Next steps and deliverables	Parametrix
3:50 p.m.	Content for Open House no. 2 in fall 2019	All
4 p.m.	Adjourn	

For agenda/schedule information, contact Mel Huie at [mel.huie@oregonmetro.gov](mailto:mel.huie@oregonmetro.gov)

# Metro respects civil rights

Metro fully complies with Title VI of the Civil Rights Act of 1964 and related statutes that ban discrimination. If any person believes they have been discriminated against regarding the receipt of benefits or services because of race, color, national origin, sex, age or disability, they have the right to file a complaint with Metro. For information on Metro's civil rights program, or to obtain a discrimination complaint form, visit [www.oregonmetro.gov/civilrights](http://www.oregonmetro.gov/civilrights) or call 503-813-7514. Metro provides services or accommodations upon request to persons with disabilities and people who need an interpreter at public meetings. If you need a sign language interpreter, communication aid or language assistance, call 503-797-1890 or TDD/TTY 503-797-1804 (8 a.m. to 5 p.m. weekdays) 5 business days before the meeting. All Metro meetings are wheelchair accessible. For up-to-date public transportation information, visit TriMet's website at [www.trimet.org](http://www.trimet.org).

## Thông báo về sự Metro không kỳ thị của

Metro tôn trọng dân quyền. Muốn biết thêm thông tin về chương trình dân quyền của Metro, hoặc muốn lấy đơn khiếu nại về sự kỳ thị, xin xem trong [www.oregonmetro.gov/civilrights](http://www.oregonmetro.gov/civilrights). Nếu quý vị cần thông dịch viên ra dấu bằng tay, trợ giúp về tiếp xúc hay ngôn ngữ, xin gọi số 503-797-1890 (từ 8 giờ sáng đến 5 giờ chiều vào những ngày thường) trước buổi họp 5 ngày làm việc.

## Повідомлення Metro про заборону дискримінації

Metro з повагою ставиться до громадянських прав. Для отримання інформації про програму Metro із захисту громадянських прав або форми скарги про дискримінацію відвідайте сайт [www.oregonmetro.gov/civilrights](http://www.oregonmetro.gov/civilrights) або Якщо вам потрібен перекладач на зборах, для задоволення вашого запиту зателефонуйте за номером 503-797-1890 з 8.00 до 17.00 у робочі дні за п'ять робочих днів до зборів.

## Metro 的不歧视公告

尊重民權。欲瞭解Metro民權計畫的詳情，或獲取歧視投訴表，請瀏覽網站 [www.oregonmetro.gov/civilrights](http://www.oregonmetro.gov/civilrights)。如果您需要口譯方可參加公共會議，請在會議召開前5個營業日撥打503-797-1890（工作日上午8點至下午5點），以便我們滿足您的要求。

## Ogeysiiska takooris la'aanta ee Metro

Metro waxay ixtiraamtaa xuquuqda madaniga. Si aad u heshid macluumaad ku saabsan barnaamijka xuquuqda madaniga ee Metro, ama aad u heshid warqadda ka cabashada takoorista, booqo [www.oregonmetro.gov/civilrights](http://www.oregonmetro.gov/civilrights). Haddii aad u baahan tahay turjubaan si aad uga qaybqaadatid kullan dadweyne, wac 503-797-1890 (8 gallinka hore illaa 5 gallinka dambe maalmaha shaqada) shan maalmo shaqa ka hor kullanka si loo tixgaliyo codsashadaada.

## Metro의 차별 금지 관련 통지서

Metro의 시민권 프로그램에 대한 정보 또는 차별 항의서 양식을 얻으려면, 또는 차별에 대한 불만을 신고 할 수 [www.oregonmetro.gov/civilrights](http://www.oregonmetro.gov/civilrights). 당신의 언어 지원이 필요한 경우, 회의에 앞서 5 영업일 (오후 5시 주중에 오전 8시) 503-797-1890를 호출합니다.

## Metroの差別禁止通知

Metroでは公民権を尊重しています。Metroの公民権プログラムに関する情報について、または差別苦情フォームを入手するには、[www.oregonmetro.gov/civilrights](http://www.oregonmetro.gov/civilrights)。までお電話ください公開会議で言語通訳を必要とされる方は、Metroがご要請に対応できるよう、公開会議の5営業日前までに503-797-1890（平日午前8時～午後5時）までお電話ください。

**ការម** Metro  
ការគោរពសិទ្ធិពលរដ្ឋរបស់ ១ សំរាប់ព័ត៌មានអំពីកម្មវិធីសិទ្ធិពលរដ្ឋរបស់ Metro  
ឬដើម្បីទទួលបានការបណ្តឹង រឿងអំពីសូមចូលទស្សនាការប្រកាស  
[www.oregonmetro.gov/civilrights](http://www.oregonmetro.gov/civilrights)  
បើសិនជាអ្នកត្រូវការអនុបកប្រែភាសានៅពេលអង្គ  
ប្រជុំសាធារណៈ សូមទូរស័ព្ទលេខ 503-797-1890 (ម៉ោង 8 រឿងអស់ម៉ោង 5 ល្ងាច  
ថ្ងៃអាទិត្យ) ប្រាំពីរថ្ងៃ  
មុនថ្ងៃប្រជុំដើម្បីអាចឲ្យគេសម្រួលភាសាសំណើរបស់លោកអ្នក

## إشعار بحقوق مدني من Metro

تحتزم Metro الحقوق والمدنية للمزيد من المعلومات حول برنامج Metro لحقوق والمدنية أو لإبداء شكوى خذات مديري رجي زيارة الموقع الإلكتروني [www.oregonmetro.gov/civilrights](http://www.oregonmetro.gov/civilrights). إن كنت بحاجة إلى مساعدة في اللغة، ي ج ب ع ل ي ك الاتصال مقدم ب ر ق ل ه ا ت ف 503-797-1890 من الساعة 8 صباحاً حتى الساعة 5 مساءً، أيام الاثنين إلى الجمعة قبل خمسة ( ) أيام عمل من موعد الاجتماع.

Paunawa ng Metro sa kawalan ng diskriminasyon Iginagalang ng Metro ang mga karapatang sibil. Para sa impormasyon tungkol sa programa ng Metro sa mga karapatang sibil, o upang makakuha ng porma ng reklamo sa diskriminasyon, bisitahin ang [www.oregonmetro.gov/civilrights](http://www.oregonmetro.gov/civilrights). Kung kailangan ninyo ng interpreter ng wika sa isang pampublikong pulong, tumawag sa 503-797-1890 (8 a.m. hanggang 5 p.m. Lunes hanggang Biyernes) lima araw ng trabaho bago ang pulong upang mapagbigyan ang inyong kahilingan. Notificación de no discriminación de Metro.

## Notificación de no discriminación de Metro

Metro respeta los derechos civiles. Para obtener información sobre el programa de derechos civiles de Metro o para obtener un formulario de reclamo por discriminación, ingrese a [www.oregonmetro.gov/civilrights](http://www.oregonmetro.gov/civilrights). Si necesita asistencia con el idioma, llame al 503-797-1890 (de 8:00 a. m. a 5:00 p. m. los días de semana) 5 días laborales antes de la asamblea.

## Уведомление о недопущении дискриминации от Metro

Metro уважает гражданские права. Узнать о программе Metro по соблюдению гражданских прав и получить форму жалобы о дискриминации можно на веб-сайте [www.oregonmetro.gov/civilrights](http://www.oregonmetro.gov/civilrights). Если вам нужен переводчик на общественном собрании, оставьте свой запрос, позвонив по номеру 503-797-1890 в рабочие дни с 8:00 до 17:00 и за пять рабочих дней до даты собрания.

## Avizul Metro privind nediscriminarea

Metro respectă drepturile civile. Pentru informații cu privire la programul Metro pentru drepturi civile sau pentru a obține un formular de reclamație împotriva discriminării, vizitați [www.oregonmetro.gov/civilrights](http://www.oregonmetro.gov/civilrights). Dacă aveți nevoie de un interpret de limbă la o ședință publică, sunați la 503-797-1890 (între orele 8 și 5, în timpul zilelor lucrătoare) cu cinci zile lucrătoare înainte de ședință, pentru a putea să vă răspunde în mod favorabil la cerere.

## Metro txoj kev ntxub ntxaug daim ntawv ceeb toom

Metro tributes cai. Rau cov lus qhia txog Metro txoj cai kev pab, los yog kom sau ib daim ntawv tsis txaus siab, mus saib [www.oregonmetro.gov/civilrights](http://www.oregonmetro.gov/civilrights). Yog hais tias koj xav tau lus kev pab, hu rau 503-797-1890 (8 teev sawv ntxov txog 5 teev tsaus ntuj weekdays) 5 hnub ua hauj lw m ua nte ntawm lub rooj sib tham.



# Meeting minutes

## **Tryon Creek Cove Trail Connection Plan: Project Advisory Committee Meeting #2**

July 31, 2018

---

### **Committee members in attendance**

Amin Wahab ..... City of Portland, Bureau of Environmental Services  
Marc Peters ..... City of Portland, Bureau of Environmental Services  
Jennifer Coker ..... City of Portland, Bureau of Environmental Services  
Bruce Powers ..... City of Lake Oswego  
Seth Brumley ..... Oregon Department of Transportation  
Jeff Gudman ..... Lake Oswego City Council  
Jeff Merrill ..... Metro, Parks and Nature  
Mel Huie ..... Metro, Parks and Nature  
Patty Freeman ..... The Street Trust  
Terri Preeg Riggsby ..... Tryon Creek Watershed Council  
Charles (Skip) Ormsby ..... Birdshill Neighborhood Association  
Craig Stephens ..... Old Town Neighborhood Association

### **Others in attendance**

John Cullerton ..... Parametrix  
Jim Rapp ..... Parametrix  
Jeanne Lawson ..... Jeanne Lawson and Associates  
Laura Oppenheimer ..... Metro, Parks and Nature  
Ann Toledo ..... Metro, Parks and Nature  
Paden Prichard ..... Citizen  
Susanna Kuo ..... Citizen

### **Committee members not in attendance**

Joe Recker ..... TriMet/Willamette Shoreline Consortium  
Blair Whiteman ..... Oregon Parks and Recreation Department  
Jamie Snook ..... Metro, Planning  
Ivan Anderholm ..... City of Lake Oswego  
Karen Buehrig ..... Clackamas County Transportation Planning

---

### **WELCOME AND INTRODUCTIONS**

The committee and members of the public introduced themselves. Facilitator Jeanne Lawson explained that one of the goals of today's meeting is to identify route alternatives for more detailed analysis. Mel Huie shared historic photographs of the site that were sent to him by Lake Oswego historian Susanna Kuo.

### **PUBLIC ENGAGEMENT UPDATE**

Laura Oppenheimer, Metro, discussed the public engagement activity related to the project. There have been many social media posts from both Metro and the City of Lake Oswego, and the responses from the public have been generally positive. In addition, there has been one article in

the Lake Oswego newsletter (*Hello, LO*), two articles in the Lake Oswego Review, and a postcard mailer to around 8,000 households.

A survey opened on July 19 and will close on August 9, allowing the public to weigh in on the alternatives. As of the meeting date, 257 people have responded and their answers appear to align closely with the responses received at the open house.

Preliminary results of the survey are as follows:

- Tryon Creek Crossing
  - Eighty-five percent of respondents agree that the creek crossing is a great or good solution.
- Alternative Route 1: New traffic signal at Stampher Road and Terwilliger Boulevard.
  - Split opinion on whether this is a good or poor option, 50/50.
- Alternative Route 2: Highway/railroad undercrossing
  - Eighty percent agree this is a great or good solution. However, many people mention the high price tag.
- Alternative Route 3: Pedestrian-activated at-grade crossing
  - Over 50 percent think this is a poor or very poor solution. Many state traffic concerns similar to Alternative Route 1.
- Alternative Route 4: Existing roads and sidewalks
  - Only 13 percent think this is a good alternative and over 54 percent agree this is a very poor solution.

### **SUMMARY OF OPEN HOUSE #1**

The first open house took place on July 19 at the Adult Community Center in Lake Oswego. There was a good turnout, around 45-50 people. Three stations were set up: project overview, alternative routes, and a trail alignment options interactive activity. Staff and committee members were available at each station to answer questions. The interactive station mimicked the online survey and asked for the public's opinion regarding each of the route alternatives and about the bridge over Tryon Creek. The responses at this station were nearly identical to the preliminary results obtained through the online survey. In addition, there were two presentations given: one at 5:40 p.m. and one at 6:40 p.m. The first presentation was given to a larger audience; whereas the second presentation was given to a smaller group of people giving way to more opportunity for discussion. The next open house is slated for the fall, but a date has not been chosen. *Attachment 1.*

### **BUREAU OF ENVIRONMENTAL SERVICES TREATMENT PLANT EXPANSION AND MITIGATION PROPOSAL FOR SITE/IMPACTS ON TRAIL ALIGNMENTS**

Jennifer Coker from the Bureau of Environmental Services (BES) discussed the Wastewater Treatment Plant expansion and how it would affect trail alignments in the study area. The project will be at 60 percent completion by November 2018. Early construction will begin in late spring/early summer 2019 and the project should be completed by 2023-24. The Plant was originally constructed in 1964 and needs to be expanded in order to accommodate peak flow. The facility also needs to be removed from the 100-year floodplain that it is currently located in. The floodplain cut mitigation concepts were created with the Tryon Creek Bridge in mind, and the

mitigation wouldn't make the bridge longer or more expensive. BES has meetings planned with Metro and Lake Oswego to get these plans revised even more. The three jurisdictions do not currently have an intergovernmental agreement relating to this project.

Jennifer also presented findings from archeological and environmental studies done in the study area. The archeological study, completed in August 2017, revealed that there is no evidence of prehistoric or early historical resources. Oregon Iron and Steel Pipe Foundry found in site; it was dismantled in 1928. The Phase I environmental site assessment found that the site was used as a dump and/or had a gas station/underground tank. *Attachment 2.*

### **INITIAL EVALUATION OF TRYON CREEK BRIDGE**

The committee unanimously approves the bridge alignment over Tryon Creek.

### **FOUR ALTERNATIVES FOR CROSSING OR-43**

Jim Rapp and John Cullerton presented for the committee's review the four alternative routes for crossing OR-43. For more details on the specificities of the routes, please see *Attachment 3.*

In order to narrow down the alternatives due to consultant budget and time restraints, Jeanne facilitated a group discussion and identification of options to carry forward for detailed evaluation. Each committee member was asked to hold up a green, yellow or red piece of paper in response to each alternative. Below are the results.

- Alternative Route 1: New traffic signal at Stampher Road and Terwilliger Boulevard
  - Most members chose green, one chose yellow and one chose red.
  - This option will be carried forward for detailed evaluation.
- Alternative Route 2: Highway/railroad undercrossing
  - This option was popular with the public, but the committee was mixed. There were five greens, three yellows and three reds.
  - Parametrix reiterated that this option would be very complicated to complete.
  - This option will be carried forward for detailed evaluation.
- Alternative Route 3: Pedestrian-activated at-grade crossing
  - All but two members chose red, one chose yellow and one chose green.
  - This option will not be carried forward for further analysis.
- Alternative Route 4: Existing roads and sidewalks
  - This alternative was unpopular with the public, but fairly popular with the committee as a fallback option. Six greens and three yellows.
  - Parametrix identified that this option does not include bike lanes, and that there is little opportunity to create them. This would only benefit pedestrians, not cyclists.
  - This alternative would involve minimal capital improvements and could serve as an interim option while funding or other issues are resolved. The team will not develop this option any further, but will maintain this as a possible interim or fallback option.

- Alternative Route 4.5: Bridge over OR-43
  - Parametrix developed a conceptual plan spurred from public input to have a bike/pedestrian bridge over OR-43. This bridge isn't a possibility because with the grade issues, the bridge would land in the Willamette River. The conceptual plan was created to show why this wasn't chosen as a possible alternative.
  - All committee members agreed that this isn't an option, all chose red.
  - This concept will not be carried forward for detailed evaluation.

Skip Ormsby explained another option for crossing OR-43, and drew a diagram. He will be sending Mel Huie a detailed description of this idea.

### **Decisions**

- Alternative Routes 1 and 2 will be carried forward for detailed evaluation.
- Alternative Route 4 will not include any further analysis, but will be available as an interim or fallback option.
- Building a bridge over OR-43 is not feasible.
- The committee unanimously approved the Tryon Creek bridge alignment.
- The next PAC meeting will precede the second open house.

### **Actions agreed upon**

- Technical team to complete evaluations on Alternative Routes 1 and 2.  
Deadline: Prior to PAC meeting #3
- Skip Ormsby to send Mel Huie a detailed description of his OR-43 crossing idea.  
Deadline: August 31, 2018

### **Next meeting**

Date to be determined. Terri Preeg Riggsby would like the meeting location moved to Lake Oswego.

The meeting adjourned at 4:00 p.m.

Meeting summary by Ann Toledo, Metro Parks and Nature

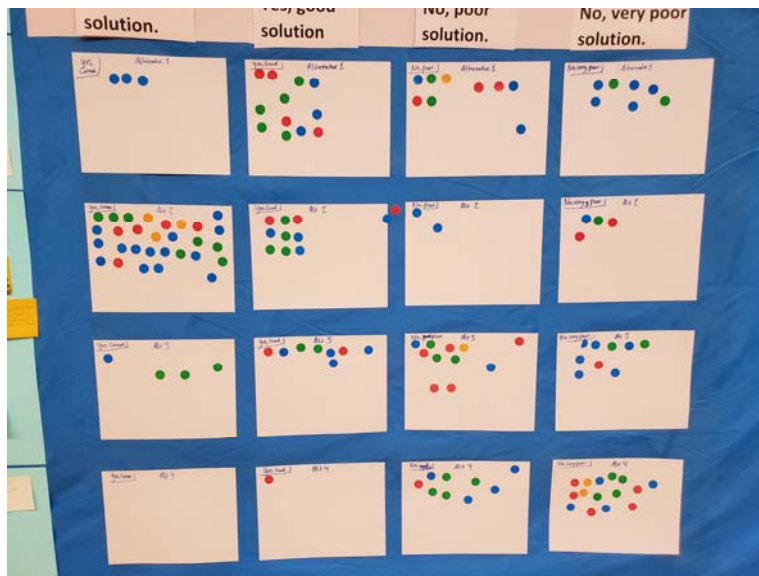
Questions or need more information? Contact Mel Huie, Metro Parks and Nature at [mel.huie@oregonmetro.gov](mailto:mel.huie@oregonmetro.gov)

### Interactive Activity on OR-43 Crossing Options



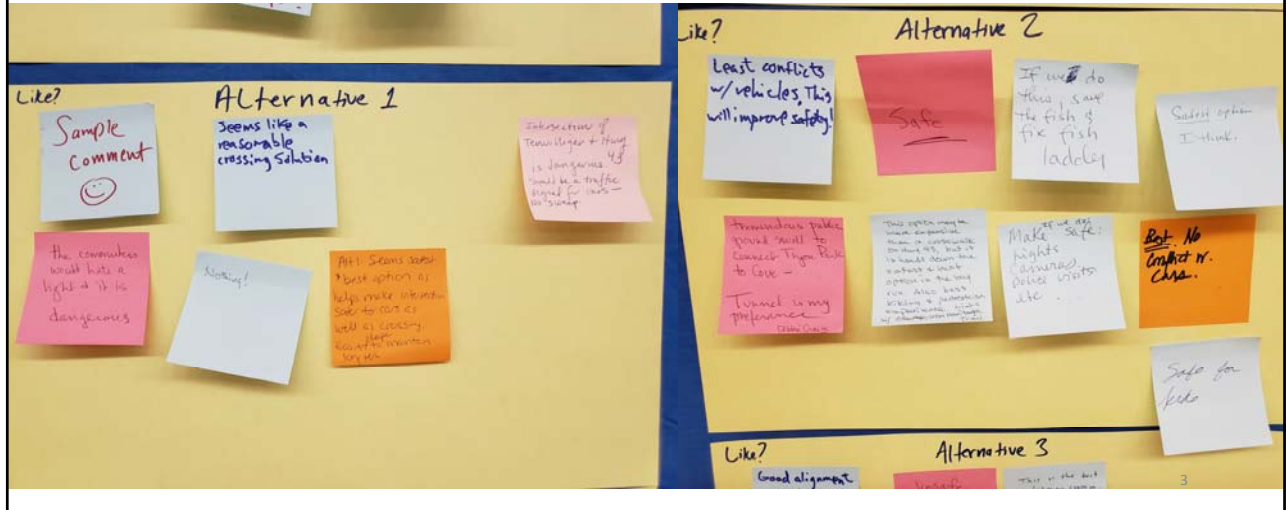
1

### The Dots Speak: Great, Good, Poor, and Very Poor Solutions



2

# What Participants Like about Alternative 1 and 2





working for clean rivers



**METRO PAC Meeting #2**  
**Tryon Creek Wastewater Treatment Plant**  
**Headworks Improvements Project**

**Project Update**  
**Jennifer Coker, PE**  
**31 July 2018**



ENVIRONMENTAL SERVICES  
CITY OF PORTLAND  
working for clean rivers

NICK FISH, COMMISSIONER  
MICHAEL JORDAN, DIRECTOR

## Agenda

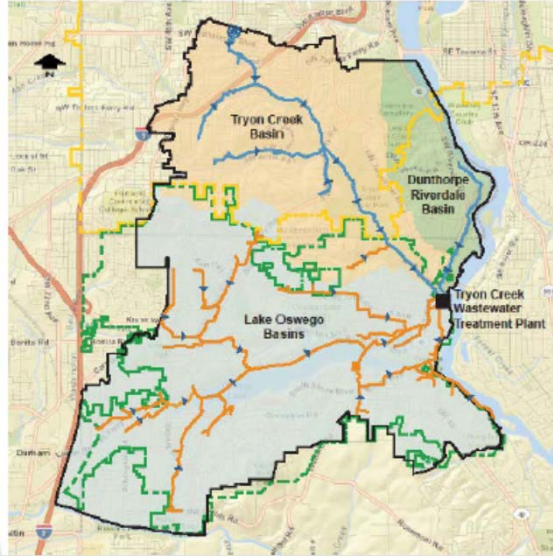
- Facility Overview, Needs, Goals
- TCWTP Headworks Improvement Project Overview, Status, Schedule
- BES Floodplain Mitigation Concepts
- Summary of Future Project Coordination
  - Pedestrian Bridge
  - BES needs for Facility Expansion
- Next Steps



## TCWTP Service Area and Population

### 2010 Estimate – 49,900

- City of Portland: 15,000
- Dunthorpe-Riverdale: 2,900
- Lake Oswego: 32,000



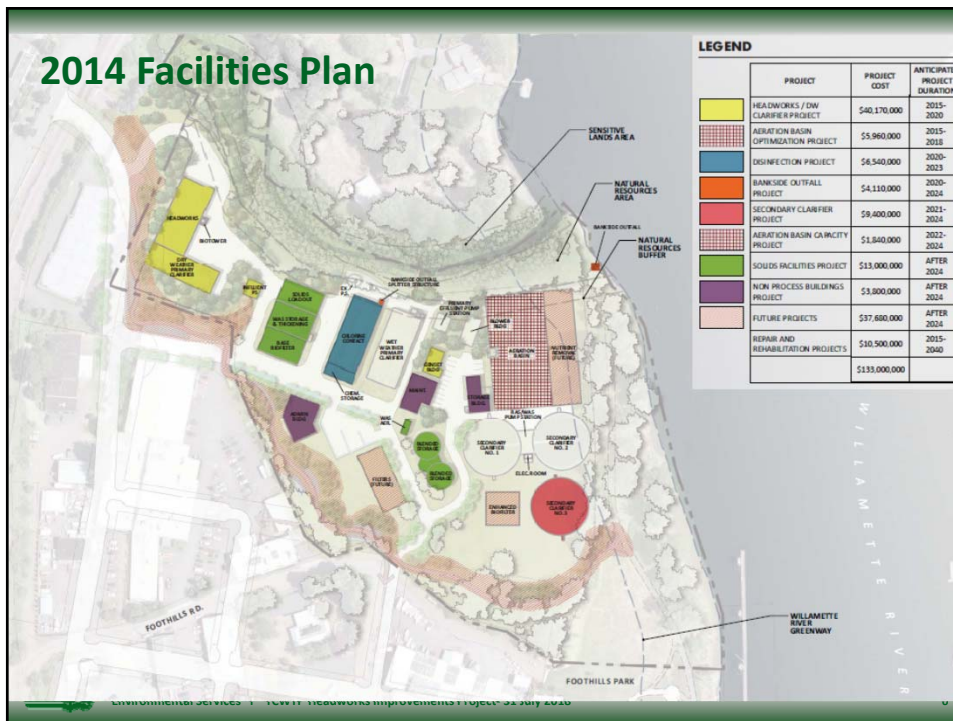
## Tryon Creek Wastewater Treatment Plant

- Constructed: 1964
- Expanded: 1976
- Last Construction: 2004
- Adjacent Water Bodies
  - Willamette River
  - Tryon Creek



## Facility Plan Project Triggers

- Condition
- Peak Flows
- Performance/Operability
- Regulatory
  - NPDES Permit Renewal Requirements
  - Class 1 Reliability Standards
  - Willamette Basin Standard &/or blending elimination
  - Nutrient Removal
- Site Enhancements

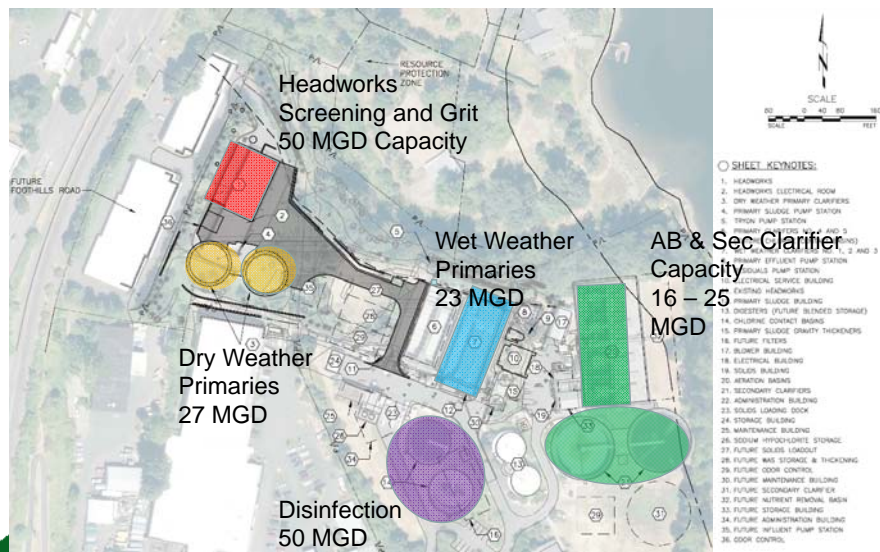


## Treatment Plant Improvements

- **Purpose:**
  - Replace open air headworks
  - Improve plant electrical reliability
  - Increase treatment peak hydraulic capacity from 37.5 to 50 MGD
  - Capture and treat odorous air
  - Locate facilities out of/above the 100-year flood plain
- **Scope:**
  - Headworks building
  - Two primary clarifiers
  - Odor control systems
  - New plan electrical feed
  - Complete electrical distribution equipment and system replacement
  - Modifications to existing plant facilities
  - Site improvements and yard piping



## Site Plan, Constraints



## CM/GC Schedule

Task	Duration (Months)	Start	Finish
Pre-design to 30%	18	Aug 2016	Jan 2018
Pre-design Contingency	2	Feb 2018	Mar 2018
Design - 30% to 60% and GMP RFP Documents	8	Apr 2018	Nov 2018
Design GMP RFP Documents to Final Design/Permitting	9	Dec 2018	Aug 2019
Design Completion/Permitting Contingency	3	Sep 2019	Nov 2019
CM/GC GMP/Construction Contract Negotiations	3	Dec 2018	Feb 2019
CM/GC Contracting Process Contingency	2	Mar 2019	Apr 2019
CM/GC Mobilize and Early Construction Work*	7	May 2019	Nov 2019
Construction to Facility Startup	25	Dec 2019	Dec 2021
Construction Phase Contingency	5	Jan 2021	May 2022
Post-Startup Demolition/Site Improvements to Demobilize	5	Jun 2022	Oct 2022
Project and Contract Closeout	6	Nov 2022	Apr 2023
Closeout Task Contingency	2	May 2023	Jun 2023
<b>Total Project Duration</b>	<b>107</b>		
<b>Contingency Total Duration</b>	<b>12</b>		



\* Early Work packages issued under CM/GC Construction Phase Contract for site access improvements, demolition, and utility relocations prior to permitting completion using a phased building permit approach

Environmental Services | TCWTP Headworks Improvements Project- 31 July 2018

9

## Land Acquisition Findings

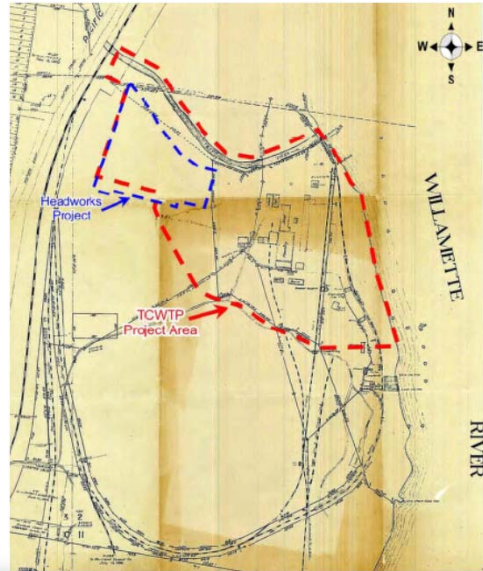
- Phase 1 ESA found site used as dump and/or had gas station/underground storage tank
- Phase II ESA recommended



10

## Archaeological Survey

- Arch. Survey- August 2017
- No evidence of prehistoric or early historical resources
- Oregon Iron and Steel Pipe Foundry Located in site
- Foundry dismantled in 1928
- Implementation of inadvertent discovery plan recommended



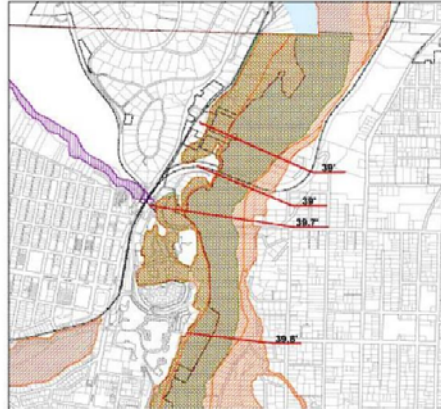
## Floodplain and Willamette Greenway



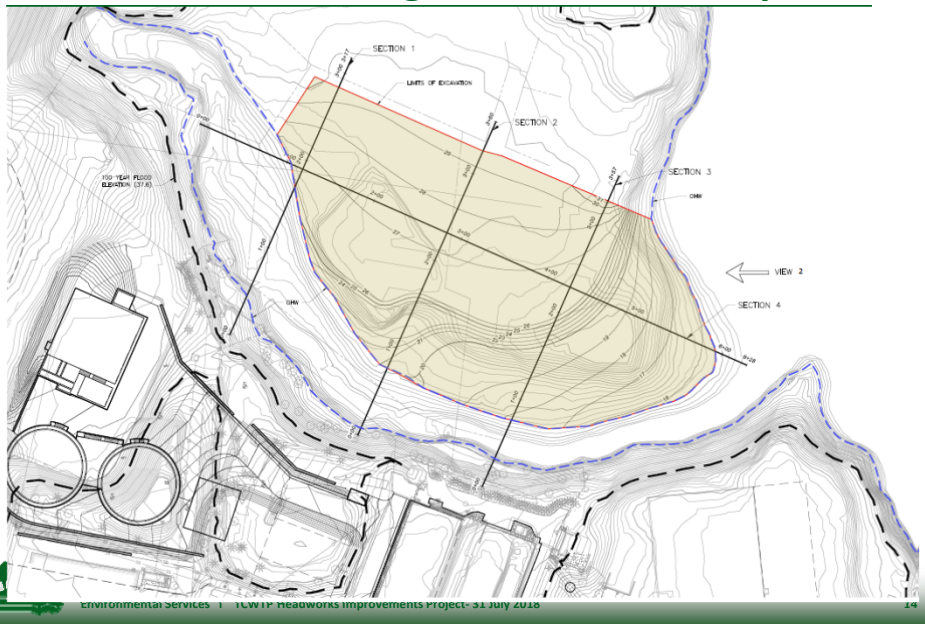
## Balanced Cut and Fill

- FEMA map revision process fill within floodplain (CLOMR/LORM-F)
- FEMA Flood Insurance Rate Map Base Flood Elevation 37.4 ft NAVD 88/35.3 COP
- Total Cut/Fill 11,000 CY

Figure 50.05.011-D: Flood Management Area Map D



## Flood Plain Cut Mitigation-First Concept



## Floodplain Cut Second Concept



## Fill Placement Second Concept



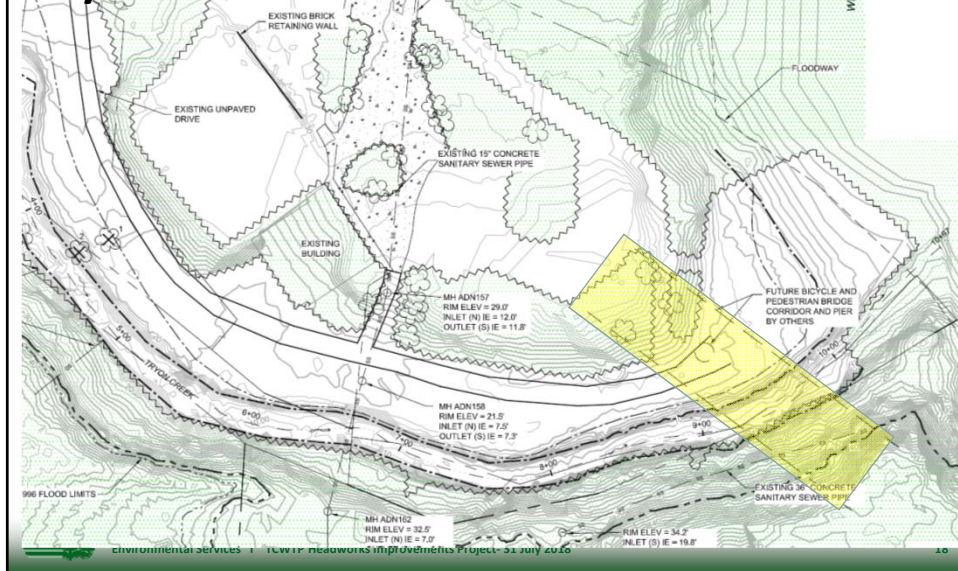


## Tryon Creek Pedestrian Bridge



## Previous Project - 2009

### Tryon Creek Confluent Habitat Enhancement



## Existing IGA –Pedestrian Bridge

---

- IGA between BES and City of Lake Oswego
- February 2010
- Allows BES Habitat Enhancement Project and:
  - Future Pedestrian Bridge, Pier and Abutment constructed by Lake Oswego
  - Future Pathway for canoe/kayak on north beach
  - Pathway Bridge Alignment negotiations
    - Mutually agreeable connection through WWTP to Foothills park



## Next Steps

---

- Coordinate mitigation between City of Portland, METRO, and Lake Oswego, and other stakeholders, hopefully reaching consensus.
- Finalize IGA – LO, METRO, Portland for Tryon Cove Floodplain fill mitigation.
- Prepare initial documents for CLOMA
- Finalize Mitigation Design Details.

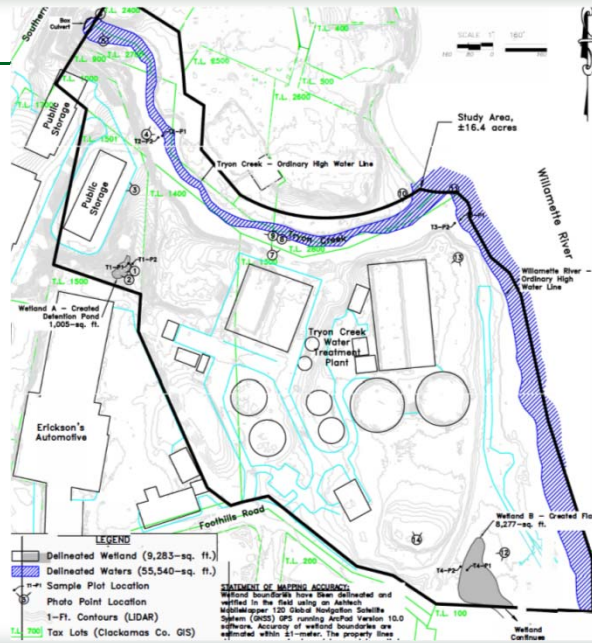


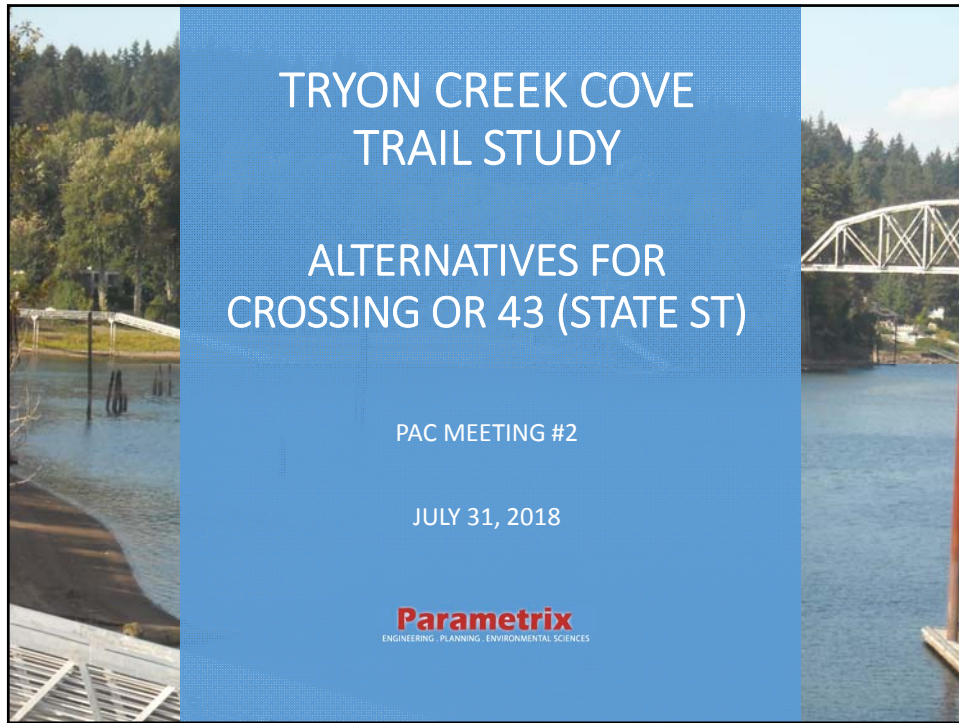
# Questions?



## Wetlands

- Two Wetlands
- DSL Concurrence Letter 12/20/2017





### OR 43 Crossing Alternatives Evaluation Criteria

- Safety
- Route Directness
- Cost
- Ease of Use
- Traffic Impacts
- Environmental Impacts
- Institutional Barriers
- Constructability

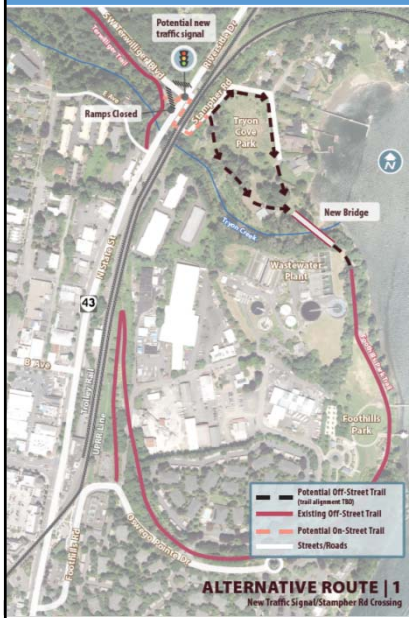
Parametrix

## Four Alternative Routes/Crossings

1. **New Traffic Signal @ Stampher Rd and @ Terwilliger Blvd.**
2. **Highway/Rail Undercrossing** between Stampher Road & Tryon Creek
3. **Pedestrian Activated At-Grade Crossing** just south of E Avenue
4. **Foothills Park Connection** following OR 43 and Foothills Road

Parametrix

## Alternative #1: New Full Traffic Signal



- Full traffic signal
  - Bikes/Peds push button
  - Vehicles on Stampher Road controlled by loop detector
- Eliminate existing ramps to/from Terwilliger Blvd.
- Bike/ped crossing likely on north leg of intersection.
- Tryon Cove bike/ped access via shared-use of Stampher Road.

Parametrix

**Alternative #1: New Full Traffic Signal  
Initial Evaluation**

**Safety**

- Signalized crossing
- Concern with bike/peds sharing Stampher Rd. with vehicles
- Poor sight distance at rail undercrossing, but roadway is low speed
- Improves vehicle safety for eastbound to northbound left turns

**Route Directness**

- Bike/peds crossing likely on north side of Terwilliger
- Potential to connect to trail near existing pull out on Stampher Rd. east of rail undercrossing

**Cost**

- May need to add a southbound lane ~ 200 ft. north of the intersection
- Removal of Terwilliger ramps
- Signing, striping, signal and supports

**Ease of Use**

- Signalized crossing familiar to users
- Easy wayfinding

**Parametrix**

**Alternative #1: New Full Traffic Signal  
Initial Evaluation**

**Traffic Impacts**

- Additional signal in congested area
- Full signal likely meets ODOT signal warrants
- Located in transition area from 35 mph to 25 mph
- Will increase shared-use of the narrow Stampher Rd

**Environmental Impacts**

- Minimal impacts on creek and parks
- Removal of landscaping between Terwilliger ramps and intersection

**Institutional Barriers**

- ODOT: Likely meets warrants, but several hoops to get through
- UPRR/Willamette Shore Line: Use of existing Stampher Rd. undercrossing should minimize concern

**Constructability**

- Easily built
- Traffic impacts during construction

**Parametrix**

### Alternative #2: Highway/Rail Undercrossing

- Bike/ped tunnel under OR 43
- Terwilliger Trail connection on west side of highway – potential switchbacks/retaining walls
- Tryon Cove connection on east side – potential retaining walls
- Safety features: lighting & emergency communication
- Avoids impact to planned new creek culvert

**ALTERNATIVE ROUTE | 2**  
Highway/Rail Undercrossing Connection

**Parametrix**

### Alternative #2: Highway/Rail Undercrossing Closer View

TRYON CREEK COVE TRAIL PLAN | ALTERNATIVE ROUTE | 2 Highway/Rail Undercrossing Connection

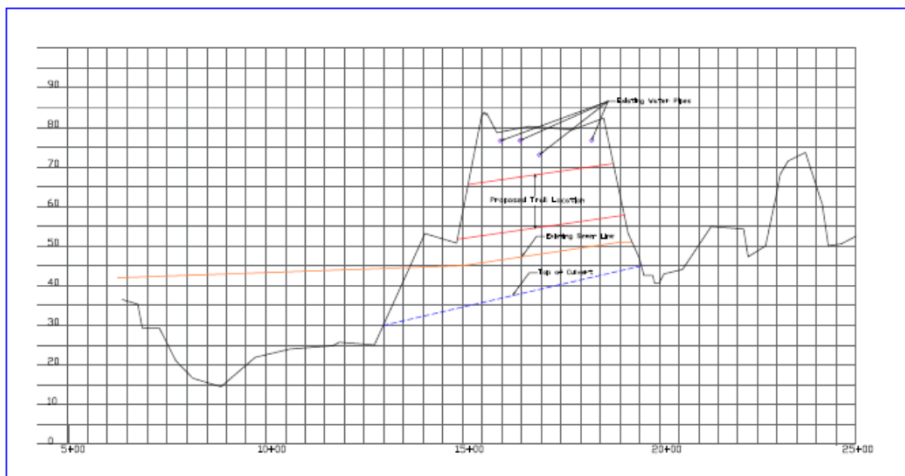
**ALTERNATIVE ROUTE | 2**  
Highway/Rail Undercrossing Connection

### Alternative #2: Highway/Rail Undercrossing Utility/Trail Plan Views



Parametrix

### Alternative #2: Highway/Rail Undercrossing Elevations



Parametrix



**Alternative #2: Highway/Rail Undercrossing  
Initial Evaluation**

**Safety**

- Avoids at-grade crossing
- Lack of visibility from State Street (OR 43) and Stampher Road

**Route Directness**

- Direct connection from Terwilliger Trail
- Good connection on east side into Tryon Cove

**Cost**

- Highest cost

**Ease of Use**

- Most direct connection
- Easy wayfinding for trail users

**Parametrix**

**Alternative #2: Highway/Rail Undercrossing  
Initial Evaluation**

**Traffic Impacts**

- No long-term traffic impacts
- Minor traffic impacts during construction

**Environmental Impacts**

- Construction of access trail on west side with retaining walls and switchbacks

**Institutional Barriers**

- ODOT: Some disruption to OR 43 during construction; need approval for undercrossing
- UPRR/Willamette Shore Line: May need approval for undercrossing

**Constructability**

- Site access for boring may be limited

**Parametrix**

### Alternative #3: Pedestrian Activated Beacon/At-Grade Crossing

- Flashing bike/ped signal with crosswalk between D and E Avenues
- Push button activated
- ½ block from existing Terwilliger Trail terminus
- Crosses railroad at existing public storage access
- Location identified in Foothills Plan for access/egress road

### Alternative #3: Pedestrian Activated Beacon Initial Evaluation

**Safety**

- Bike/Ped at-grade crossing of railroad tracks at storage unit crossing
- Pedestrian/Bike activated signal options
  - Rectangular Rapid Flashing Beacon
  - High-Intensity Activated CrossWalk Beacon
- Studies show reduced pedestrian crashes

**Route Directness**

- Near existing terminus of Terwilliger Trail
- Travels south then back north to access Tryon Cove

**Cost**

- Moderate cost
- Costs include retaining walls for trail connection from storage unit access to Tryon Cove

**Ease of Use**

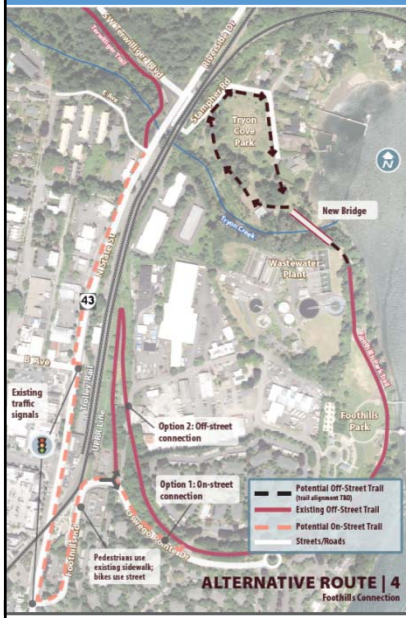
- Direct connection
- Easy wayfinding for trail users

## Alternative #3: Pedestrian Activated Beacon Initial Evaluation

- **Traffic Impacts**
  - Heavy use could disrupt traffic flow
  - Not timed with other signals
  - Transition to 25 mph
- **Environmental Impacts**
  - Construct connecting trail on east side above Tryon Creek
- **Institutional Barriers**
  - ODOT: Likely to meet pedestrian activated signal warrant, additional ODOT approvals required
  - UP/Willamette Shore Line: Use of existing storage unit access rail crossing may not be permitted, connecting trail to Tryon cove likely in UP ROW
- **Constructability**
  - Easy construction of signal
  - Connecting trail on east side more complex - retaining walls, ramps

Parametrix

## Alternative #4: Foothills Park Connection



Uses existing sidewalks on State St. (OR 43)

- West side from E to B avenues
- East side from B Avenue to Foothills Rd.

Two possible connections to Foothills Park:

- Bike/peds share Oswego Pointe Drive to Foothills Park Trail
- Curlicue Trail provides mostly separated pathway

Parametrix

### Alternative #4: Foothills Park Connection Initial Evaluation

**Safety**

- Narrow sidewalk on the west side of State St.
- B Avenue crossing has high auto volumes
- Would cross several active driveways (car wash, gas station, etc.)
- Shared use of Foothills Road and Oswego Pointe Drive could pose safety issues

**Route Directness**



- Least direct
- Curlicue trail route adds to out of direction

**Cost**

- Low cost (mostly uses existing infrastructure)

**Ease of Use**

- Circuitous connection
- Complicated wayfinding for trail users



### Alternative #4: Foothills Park Connection Initial Evaluation

**Traffic Impacts**

- Heavy bike/ped use could require more crossing time at B Avenue

**Environmental Impacts**



- None

**Institutional Barriers**

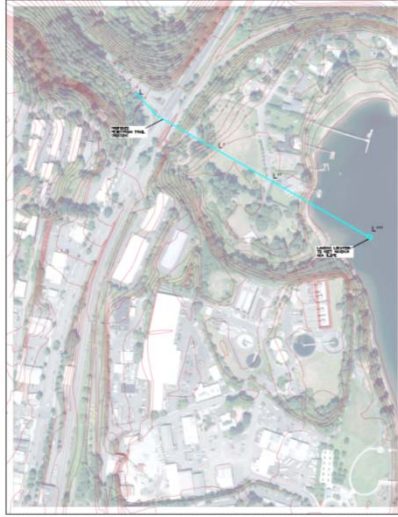
- ODOT: No new approvals required
- UPRR/Willamette Shore Line: Cross UP tracks at existing sidewalk crossing

**Constructability**

- Minimal – wayfinding signs



## Bike/Ped Bridge over OR 43 Conceptual Plan View #1



OPTION 1: PEDESTRIAN BRIDGE MEETING MINIMUM ODOT CLEARANCE AND MAXIMUM ADA PEDESTRIAN SLOPE.  
TOTAL LENGTH: 1300FT

Parametrix

## Bike/Ped Bridge over OR 43 Profile



OPTION 1: PEDESTRIAN BRIDGE MEETING MINIMUM ODOT CLEARANCE AND MAXIMUM ADA PEDESTRIAN SLOPE

## Bike/Ped Bridge over OR 43 Conceptual Plan View #2



OPTION 2: PEDESTRIAN BRIDGE WITH SWITCH BACKS MEETING MINIMUM ODOT CLEARANCE AND MAXIMUM ADA PEDESTRIAN SLOPES.

**Parametrix**

## TRYON CREEK COVE TRAIL STUDY

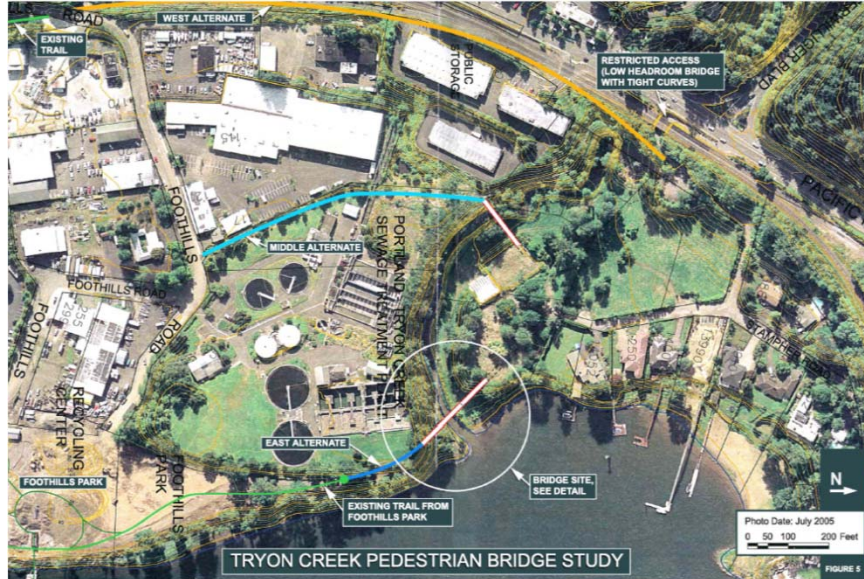
### TRYON CREEK BIKE PED BRIDGE

PAC MEETING #2

JULY 31, 2018

**Parametrix**  
ENGINEERING, PLANNING, ENVIRONMENTAL SCIENCES

## Tryon Creek Bike/Ped Bridge Tryon Creek Cove Park to Foothills Park



## Tryon Creek Bike/Ped Bridge Tryon Creek Cove Park to Foothills Park

### Crossing at mouth of Tryon Creek selected by PAC as preferred location

- Rationale:
  - Direct connection to Foothills Park Trail
  - Limits construction on steep slopes
  - Avoids Tryon Creek Wastewater Treatment Plant
  - Avoids railroad right of way
  - Construction access from Willamette River
  - Likely to be lower cost

### Tryon Creek Bike Ped Bridge Tryon Creek Cove Park to Foothills Park

