



# Community connector transit Study

*Metro and regional partners are working together to explore how smaller, more flexible solutions could make transit easier to access and more convenient.*

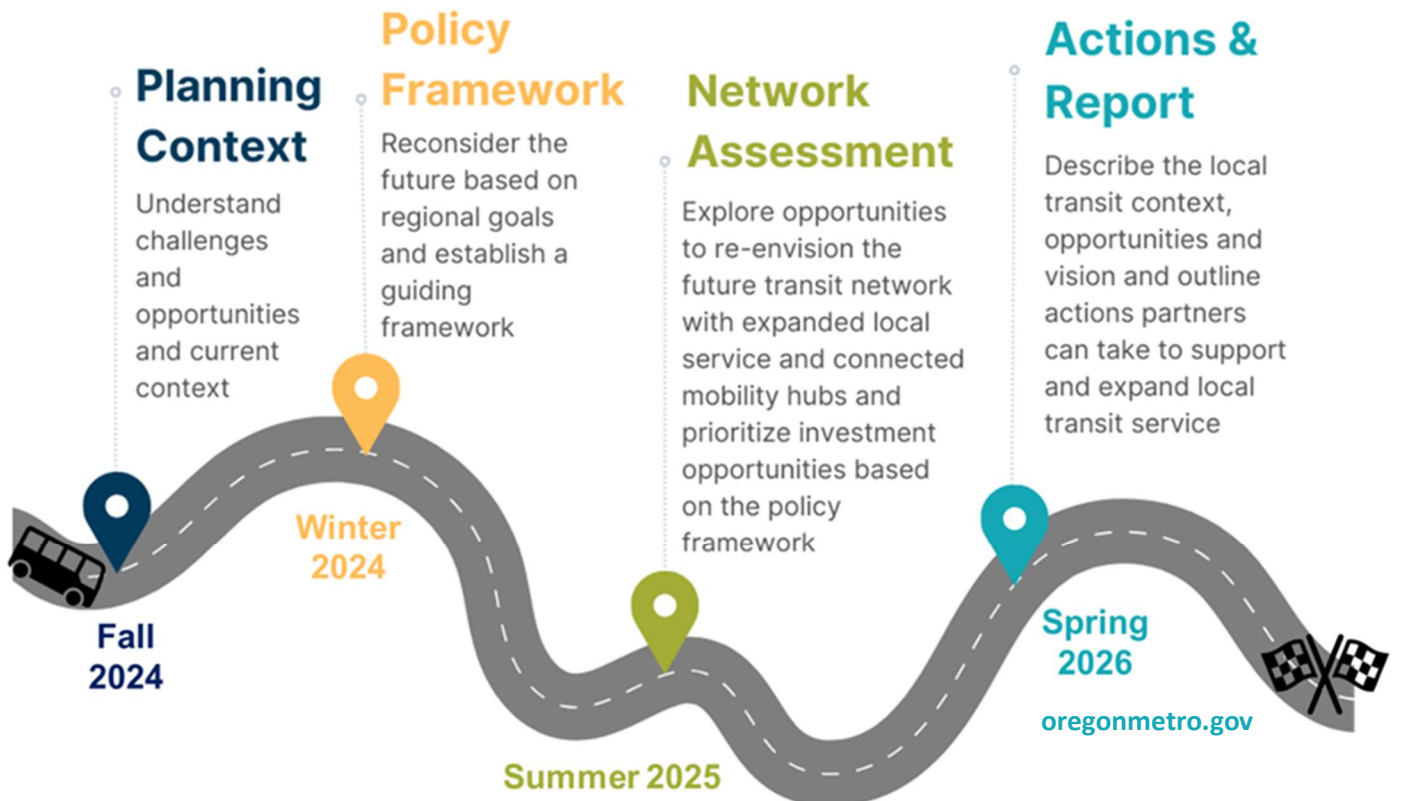
## Why explore community connectors?

Community members, partners and leaders have raised concerns about certain areas in the region lacking access to bus service. Recent State legislation (House Bill 2017) changed requirements and increased funding for local transit options that supported Multnomah and Clackamas County with providing new shuttle service and bolstered existing Ride Connection service in Washington County. At the same time, TriMet is also preparing to explore how transit that operates more like Uber and Lyft could complement their current on-demand service for people with disabilities and reach more people.



Photo courtesy of SMART

Building from emerging regional momentum, this study will explore how community connector transit solutions could expand the network and improve transit in areas with limited access. Through this study, Metro will also recommend a regional strategy for enhancing the public transit system with community connectors and identify where to allocate resources for improvements first. The outcomes of the work will inform future updates to the next [Regional Transportation Plan \(RTP\)](#) which is planned to begin in a few years.



### **What is community connector transit?**

Community connector transit is a type of public transportation that typically uses smaller vehicles (think shuttles or vans) to get people to work, school, shops, the doctor or parks.

It often is more flexible than a bus – from going off-route to pick up or drop off riders to being by-request whenever and wherever needed (like Uber or Lyft).

This flexibility can help people travel to MAX light rail or frequent bus routes (like the 20, 33 or 76) that may stop a mile or more away from their home or destination.

Learn more about the other types of transit in the region in the [Transit 101](#) fact sheet.



Photos courtesy of Clackamas County

### **How could this type of transit support regional goals?**

The Regional Transportation Plan includes the vision for a complete, well-connected network of transit on most arterial streets to ensure people in greater Portland have choices for how they travel. Transit provides a more efficient, affordable and sustainable alternative to driving that supports the [2040 Growth Concept](#) and encourages growth using regional resources efficiently to build healthy, equitable communities and a strong economy.

Many people with lower incomes, people of color, people with disabilities, people who are older and single-parent families rely on transit to get around. Rising costs and displacement have pushed where they live, work and receive services farther from the local

hubs best served by transit. Expanding community connector transit is an opportunity to unlock more transportation access in the region and make transportation more equitable.

### **Who will be involved?**

Metro is working closely with:

- TriMet, South Metro Area Regional Transit (SMART) and C-TRAN;
- Clackamas, Multnomah and Washington counties;
- City of Portland;
- Oregon Department of Transportation (ODOT); and
- Southwest Washington Regional Transportation Council.

TriMet is also currently working on taking their Forward Together service to the next level with new bus routes and more frequent service on existing MAX lines and bus routes planned for the future:

[www.trimet.org/forward](http://www.trimet.org/forward). This and other transit-related work happening in the region (including Metro's updated strategy for improving travel options) will be coordinated with the community connector transit study.

Metro and regional partners will also be working with community organizations and members, mobility and business groups, educational institutions and tribal governments to rethink the vision for transit in the region with community connectors.

### **How can I learn more?**

For information on the Community Connector Transit Study, visit [www.oregonmetro.gov/transit](http://www.oregonmetro.gov/transit)

This will be a key policy area for the 2028 RTP Update. Learn more about the RTP at [www.oregonmetro.gov/rtp](http://www.oregonmetro.gov/rtp)