



Highway 26 Bike/Ped Bridge at Cornelius Pass



Department of
Land Use & Transportation

The Highway 26 Bike/Ped Bridge at Cornelius Pass will provide a comfortable connection over U.S. 26 and complete a key gap between the Oregon Electric Railway Trail and the Rock Creek Trail.

This bridge will provide people walking and biking with a safe and comfortable alternative to traveling through the busy interchange ramps at Highway 26 and Cornelius Pass Road. The bridge and associated trail connections will link the existing segments of Rock Creek Trail to the north and protected bikeways to the south, and will connect to the future Crescent Park Greenway, allowing people walking and bicycling to reach destinations throughout Hillsboro and Washington County. Nearby destinations include schools, businesses, housing, parks, employment centers, natural areas, and a sports stadium.

Project Partners

- **Lead agency: Washington County**
- Oregon Dept. of Transportation
- City of Hillsboro

Total Estimated Project Cost

- \$26 million

Remaining Funding Gap

- \$26 million
- *Approximately \$2 million is needed to complete design and permitting, and up to \$24 million for construction.*

In Summer 2024 Metro staff collaborated with local agency partners to compile a list of "shovel-ready" projects key to building out the regional trail system, with fact sheets that can be used to advocate for and secure state, federal, and private funding for trail design and construction.

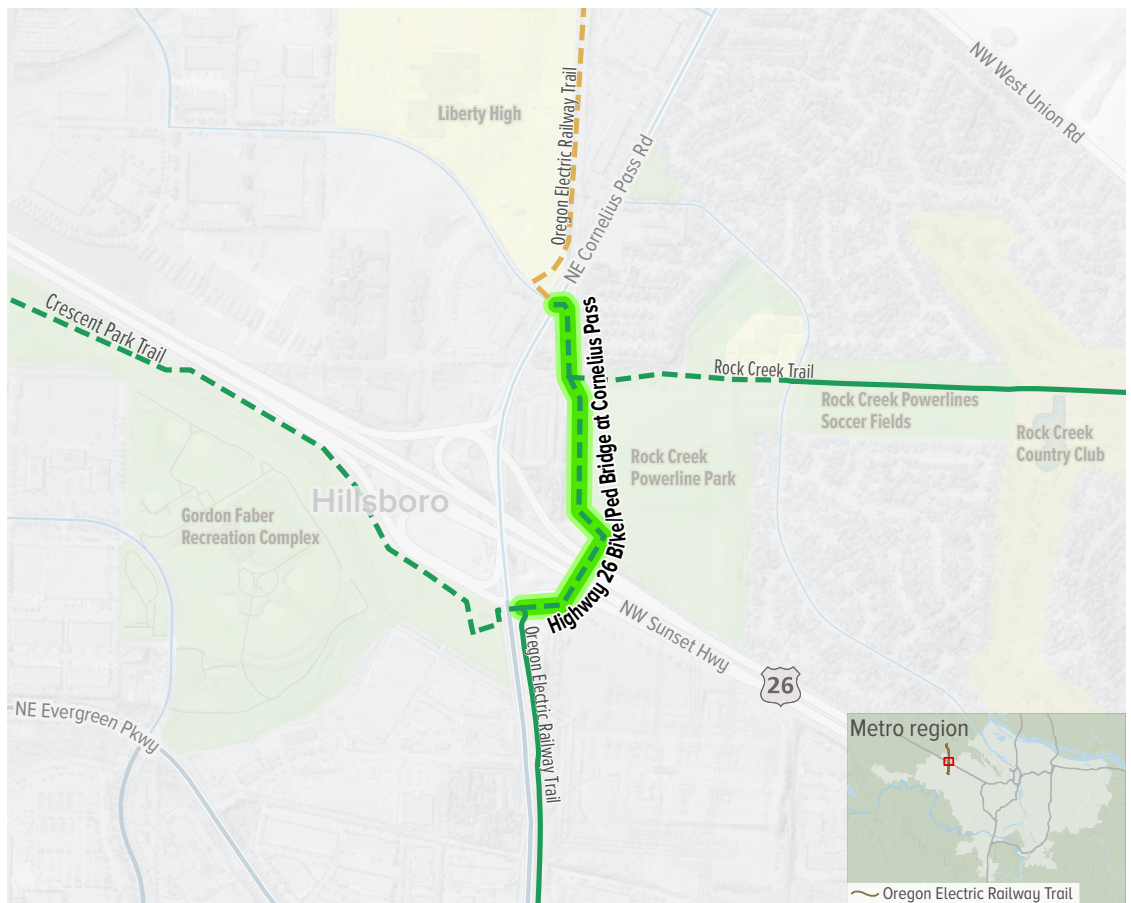
Graphics are for illustration purposes only and may not reflect final designs.



Project Vicinity

Multi-use Trail
 Existing ———
 Planned - - - -
 Conceptual - - - -

On-Street Connection
 Existing ———
 Planned - - - -



State & Federal Agency Coordination

The bridge will require review and permitting from Oregon Dept. of Transportation, the agency that owns and operates Highway 26.

Estimated Annual Project Outcomes and Impact When Project is Complete¹

- Trail users: 193,000
- Tons of greenhouse gases reduced: 14
- VMT² reduction: 70,000
- Enhanced amenities benefits³: \$96,000
- Emission benefits: \$4,000
- Health benefits: \$79,000
- Total emissions, amenities, and health benefits: \$179,000

1 - These benefits were calculated using outputs from the Metro travel demand model and guidance from the forthcoming NCHRP 08-149 Report. Values are in 2022 dollars.

2 - Vehicle Miles Traveled

3 - Enhanced amenity benefits include reductions in travel costs and quality improvements experienced by the user.

Major Opportunities & Constraints

Metro’s Regional Flexible Funds Allocation has funded initial designs and planning for final permit requirements, both expected to be completed in 2025-26. Additional funding would allow the project to move straight to final designs, construction drawings, and construction.

Project Contact

Shelley Oylear
 Bicycle and Pedestrian Coordinator
 shelley_oylear@
 washingtoncountyor.gov