



# Oregon City Loop Trail

City of Oregon City

*This project will complete 1.5 miles of the planned 9.5-mile Oregon City Loop Trail, along with a 1.2-mile spur trail connecting to a major commercial destination.*



The Oregon City Loop Trail will create a continuous, comfortable loop around Oregon City providing travelers with off-street paths and on-street connections along local roadways. The McLoughlin-Canemah section will connect to downtown Oregon City, Willamette Falls, the riverfront promenade, and the historic Canemah Neighborhood and Canemah Bluff Nature Park. The Meyers Road section will connect Clackamas Community College and Oregon City High School, while the Meyers to Beaver Creek Connector will add multimodal connectivity to an elementary school and to the city's primary commercial node. The Oregon City Loop Trail adds convenient multimodal connections to numerous TriMet bus lines.

## State & Federal Agency Coordination

The project alignment passes through some wetland and riparian areas and may require review and permitting from Oregon Dept. of State Lands. Other project areas are along or across state-owned roadways and will be coordinated with Oregon Dept. of Transportation.

## Project Partners

- **Lead agency: City of Oregon City**
- Oregon Department of Transportation
- Clackamas County
- Metro

## Total Estimated Project Cost

- Up to \$14.6 million

## Remaining Funding Gap

- \$11.5 million

*In Summer 2024 Metro staff collaborated with local agency partners to compile a list of "shovel-ready" projects key to building out the regional trail system, with fact sheets that can be used to advocate for and secure state, federal, and private funding for trail design and construction.*

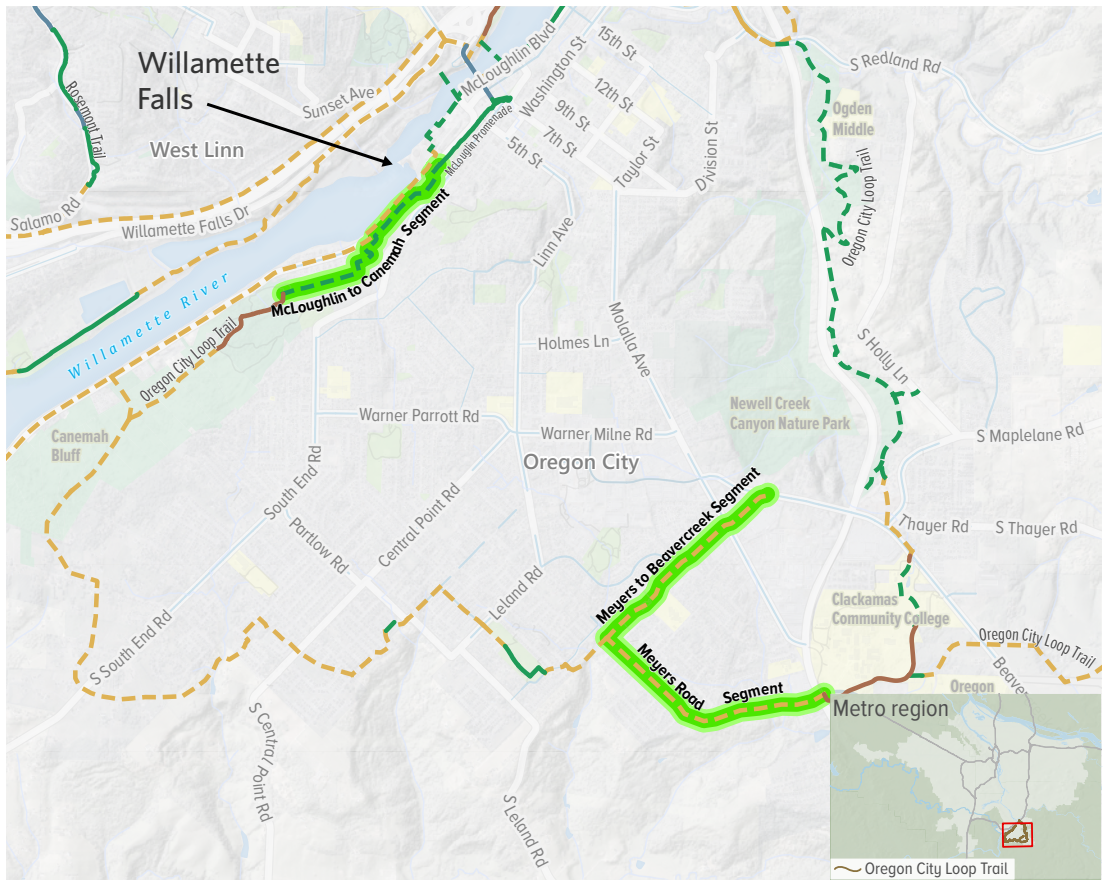
*Graphics are for illustration purposes only and may not reflect final designs.*



**Project Vicinity**

**Multi-use Trail**  
 Existing ———  
 Planned - - - -  
 Conceptual - - - -

**On-Street Connection**  
 Existing ———  
 Planned - - - -



**Estimated Annual Project Outcomes and Impact When Project is Complete<sup>1</sup>**

- Trail users: 956,000
- Tons of greenhouse gases reduced: 39
- VMT<sup>2</sup> reduction: 101,000
- Enhanced amenities benefits<sup>3</sup>: \$901,000
- Emission benefits: \$11,000
- Health benefits: \$1,000,000
- Total emissions, amenities, and health benefits: \$1,912,000

1 - These benefits were calculated using outputs from the Metro travel demand model and guidance from the forthcoming NCHRP 08-149 Report. Values are in 2022 dollars.

2 - Vehicle Miles Traveled

3 - Enhanced amenity benefits include reductions in travel costs and quality improvements experienced by the user.

**Major Opportunities & Constraints**

The Meyers Road section will be built in the existing right-of-way, but the McLoughlin-Canemah and Meyers to Beaver Creek sections still need to acquire right-of-way or easements on approximately half of the project alignment. The Meyers to Beaver Creek section uses some power transmission line right-of-way, and will require design review and alignment coordination with Portland General Electric.

**Project Contact**

Josh Wheeler  
 Assistant City Engineer  
 JWheeler@orc.city.org