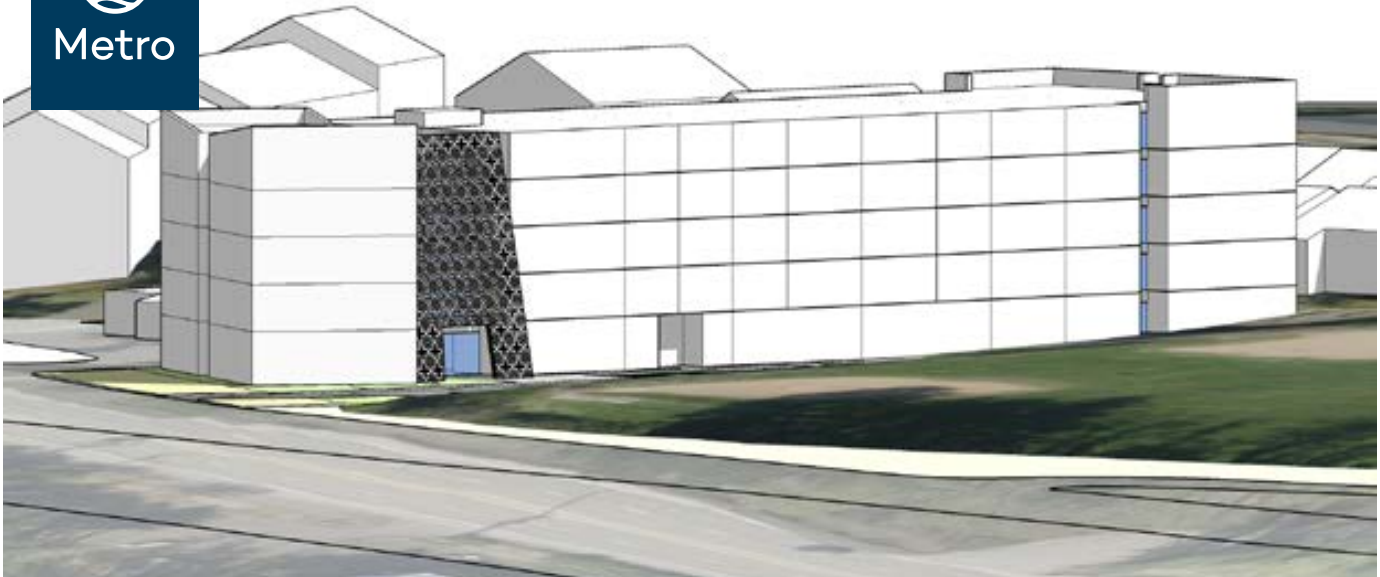




Metro



At a glance

Total development cost:
\$56.6 million

Metro bond funds: \$13.5 million

Bond funds per unit: \$137,673

Project type: New construction

Developer/owners: Community Partners for Affordable Housing (CPAH)

Partners: Humanity Assistance Kindness Interculturalism Community Services (HAKI)

Local Implementation Partner:
Portland Housing Bureau

Architect: LRS Architects

General contractor: Walsh O'Neill Community Builders

Funding: Metro affordable housing bond, Low-income housing tax credits (LIHTC), Metro site acquisition program funds, HOME funds, deferred and contributed developer fee, SDC waiver, grants

Construction begins: June 2025

Anticipated completion: August 2026

oregonmetro.gov/housing

Jamii Court

SW Barbur Blvd - Portland - Community Partners for Affordable Housing (CPAH)

The Jamii Court project will build a new affordable housing complex on the former site of a Portland Value Inn in Southwest Portland's West Portland Park neighborhood, providing 98 apartments for households earning less than 30% to 60% of the area median income. With a significant share of family-sized apartments (two or more bedrooms), Jamii Court will create much-needed affordable housing for families and larger households, with a targeted emphasis on serving community members of color who are at risk of displacement from Southwest Portland. Fifteen of Jamii Court's apartments are designated for permanent supportive housing, providing housing with wraparound services for residents who have experienced chronic homelessness or have at least one disability.

The project is conveniently located within walking distance of high frequency bus lines, parks, schools, and the library. Future residents can also access multiple grocery stores, cultural centers and places of worship in the surrounding neighborhood.

Jamii Court will feature a community room with a kitchen, a second flexible community space for events and gatherings, a lending library, computer stations, and outdoor space with fruit trees. Humanity Assistance Kindness Interculturalism Community Services (HAKI) and CPAH will provide resident services and Urban League of Portland will provide culturally specific supportive services. Planned services and programming include eviction prevention, community building and youth programming.

Jamii Court's development team will strive to achieve Earth Advantage Platinum certification to ensure sustainability standards.

Development program

The Barbur Apartments project will create 98 apartments in the West Portland Park neighborhood of Portland.

Unit size (no. of bedrooms)	No. of units	AMI %	PSH ¹	PBVs	Square feet/unit
Studio	11	60%	0	0	364
Studio	4	45%	0	0	364
Studio	2	30%	0	2	364
1-bedroom	8	60%	0	0	572
1-bedroom	5	45%	0	0	572
1-bedroom	10	30%	0	10	572
2-bedroom	19	60%	0	0	780
2-bedroom	10	45%	0	0	780
2-bedroom	11	30%	11	11	780
3-bedroom	2	60%	0	0	988
3-bedroom	8	30%	4	8	988
4-bedroom	8	30%	0	8	1088
Total	98		15	39	

*Area median income, or AMI, is set by the Department of Housing and Urban Development (HUD) and determines maximum monthly rents for these affordable homes. More information on current area median income levels and maximum rents can be found on [Metro's website](#).

Amenities

- Convenient location with access to grocery stores, schools and parks
- Proximity to high-frequency transit
- Resident services in partnership with HAKI and culturally specific supportive services through Urban League
- Multiple community spaces for hosting events and gatherings