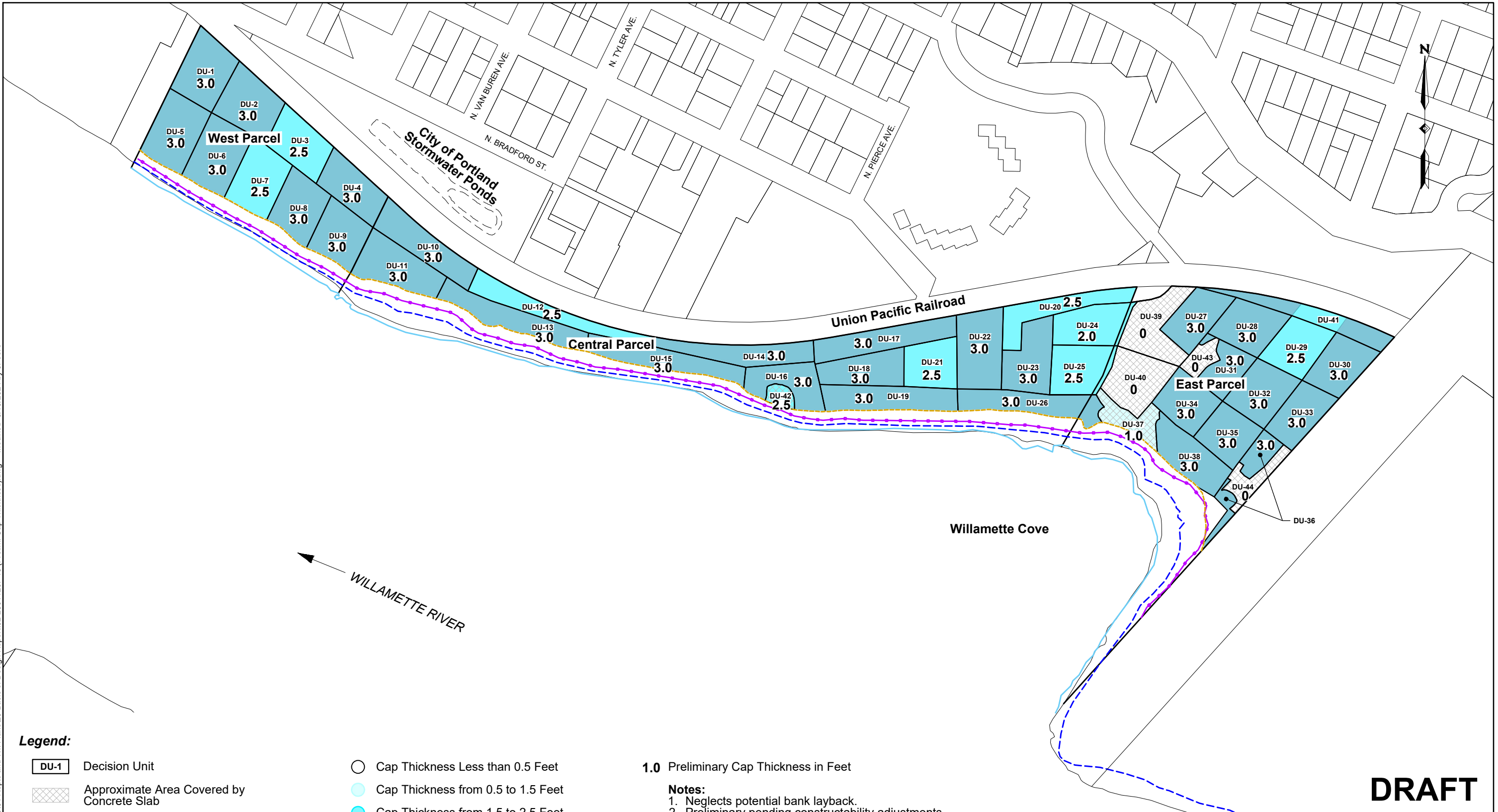


I:\Client\Port of Portland\00-Portland\05-WC\01-Reports and Wk Plans\29-Basis of Design Report\32-23011207\_13 (Prelim. Cap Thickness).dwg Modified: 8/15/2024 by JPoore



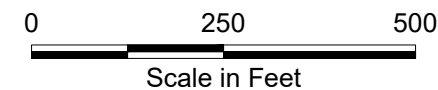
**Legend:**

- DU-1 Decision Unit
- Approximate Area Covered by Concrete Slab
- Top of Bank
- Ordinary High Water Line (20.1NAVD88)
- Mean High Water Line (13.3NAVD88)
- Ordinary Low Water Line (6.9NAVD88)
- Cap Thickness Less than 0.5 Feet
- Cap Thickness from 0.5 to 1.5 Feet
- Cap Thickness from 1.5 to 2.5 Feet
- Cap Thickness Greater than 2.5 Feet

**1.0** Preliminary Cap Thickness in Feet

**Notes:**

1. Neglects potential bank layback.
2. Preliminary pending constructability adjustments.
3. Cap thickness based on combined clean topsoil and clean general fill.



**NOTE:** Base map prepared from Bing Imagery. Tax lot information from © Oregon Metro [www.oregonmetro.gov/rliis](http://www.oregonmetro.gov/rliis) (2023). Historical base layer information from an electronic file provided by Hart Crowser.

**DRAFT**

**Preliminary Cap Thickness**

Basis of Design Report  
Willamette Cove Upland Facility  
Portland, Oregon

Apex Companies, LLC 15618 SW 72nd Avenue Tigard, Oregon 97224	Project Number: 32-23011207	Drawn: JP	Approved: HFC	Figure 13
	August 2024			