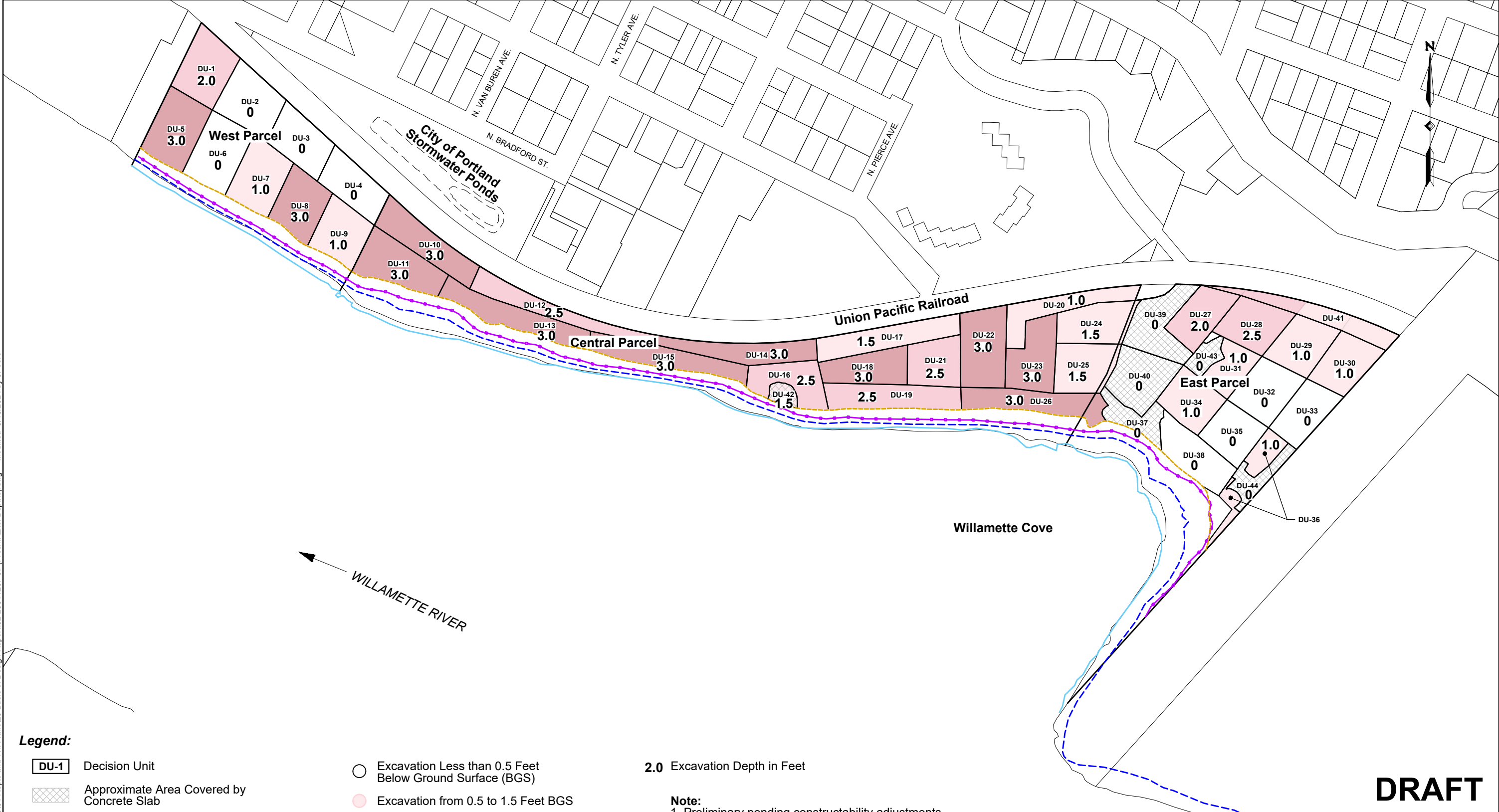


I:\Client\Port of Portland\00-Portland\05 W\01 Repts and Wk Plans\29 Basis of Design Report\32-23011207\_07 (Prelim. Exc. Depths).dwg Modified: 8/15/2024 by J.Poore

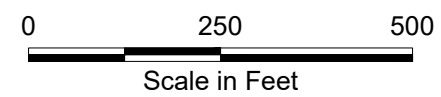


**Legend:**

- DU-1 Decision Unit
- Approximate Area Covered by Concrete Slab
- Top of Bank
- Ordinary High Water Line (20.1NAVD88)
- Mean High Water Line (13.3NAVD88)
- Ordinary Low Water Line (6.9NAVD88)
- Excavation Less than 0.5 Feet Below Ground Surface (BGS)
- Excavation from 0.5 to 1.5 Feet BGS
- Excavation from 1.5 to 2.5 Feet BGS
- Excavation Greater than 2.5 Feet BGS

**2.0** Excavation Depth in Feet

**Note:**  
1. Preliminary pending constructability adjustments.



**NOTE:** Base map prepared from Bing Imagery. Tax lot information from © Oregon Metro [www.oregonmetro.gov/rfis](http://www.oregonmetro.gov/rfis) (2023). Historical base layer information from an electronic file provided by Hart Crowser.

**DRAFT**

<b>Preliminary Excavation Depths</b>				
Basis of Design Report Willamette Cove Upland Facility Portland, Oregon				
Apex Companies, LLC 15618 SW 72nd Avenue Tigard, Oregon 97224	Project Number: 32-23011207	Drawn: JP	Approved: HFC	Figure <b>7</b>
	August 2024			