

LOCAL SHARE

\$92 million allocated to local governments for park improvement projects and locally important acquisitions, www.oregonmetro.gov/localshare

Local share program description

The local share program distributes \$92 million to 27 park providers (23 cities, 2 counties and 2 park districts) across the greater Portland region to invest in their community’s parks and nature projects including land acquisition, habitat restoration and connectivity, facilities at public parks and natural areas, local and regional trails and interpretive or environmental education facilities.

Once park providers submit a project, Metro staff review and approve it, and the two governments negotiate an agreement that governs the disbursement of local share funding. The timing of local share project submittal is determined by park providers.

The local share team is working to support park providers of all sizes to identify projects that meet bond criteria and community priorities. As of June 2024, Metro has awarded a total of \$30 million to 9 park providers to support 17 projects. Metro staff continue to have active conversations with several other park providers about priority projects for local share funds. Finally, in May 2024, Metro staff convened a few park providers to share their experiences working with the local share program with the oversight committee.

Local share program milestones completed as of June 2024

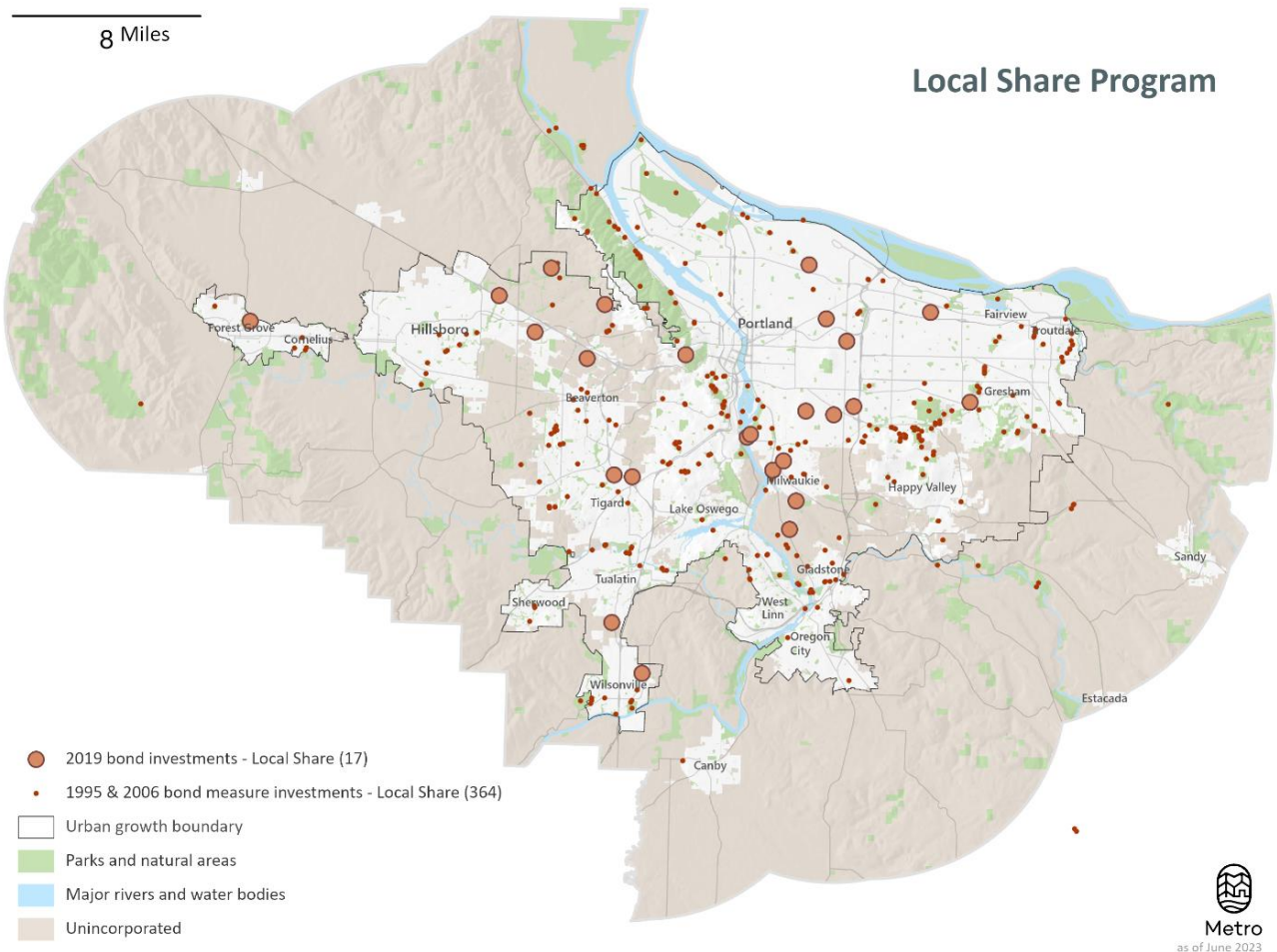
Category	Milestones completed from 2023 through summer 2024
Number of projects awarded funds ¹	12 (5 for Portland Parks and Recreation, 1 for Forest Grove, 1 for Wilsonville, 1 for North Clackamas Parks and Recreation District, 1 for Milwaukie, 2 for Tigard, 1 for Tualatin Hills Park and Recreation District)
Dollars awarded for local share projects	\$20.2 million
Dollars spent through completed projects	\$2.7 million
Ongoing conversations with multiple park providers to support in the project submittal process	Over 20
Number of roundtables to support learning on bond criteria	Total to date since 2021: 8 (on tribal government engagement, workforce and contract equity, anti-displacement, community engagement)

¹ Park providers can submit one or multiple projects for local share funds and some of the park providers listed in this table for 2023-2024 have been awarded funds for priority projects in previous fiscal years. See full list of local share awards as of June 2024 in appendix.

Additional local share resources

- [Local share program handbook](#)
- Local share [community engagement toolkit](#) and [planning guide](#), providing resources to park providers on utilizing meaningful engagement strategies to identify and submit projects for the bond's local share program funding
- [Presentation and discussion with select park providers at oversight committee's May 21, 2024 meeting on their experience with the local share program](#)
- [Presentation to the oversight committee on the bond's local share program](#)
- [Video explainer on the bond's local share program](#)

Figure 1, map of local share project awards as of June 2024



Looking ahead

The local share team will continue to work with the region's park providers to identify, submit and approve priority projects for bond local share funding. The team will continue to identify resources and strategies as well as findings from interviews and surveys of park providers to support the

region's park providers in identifying priority projects that address the bond criteria including roundtables, one on one meetings and site visits.

The team anticipates that the pace of local share project submittal will continue to increase. As additional park providers submit priority projects, the team will work with park providers to capture and report on progress made in addressing of bond criteria related to engagement, contracting and other areas.

Markers for progress on local share in 2024 and beyond

- Total number of park providers that have submitted a project or projects for review and percent of park providers submitted out of 27 total
- Total number of awards made to park providers after they submit projects
- Total dollars awarded and reimbursements made to priority local share projects
- Number of conversations with park providers about submitting priority projects
- Map of location and type of local share projects that have been awarded bond funds to date
- Reporting from park providers on how they're advancing bond criteria in project selection, development and activation, which will begin in summer of 2025
- Interviews and surveys of park provider staff to understand the impact of advancing local share projects and implementing bond criteria