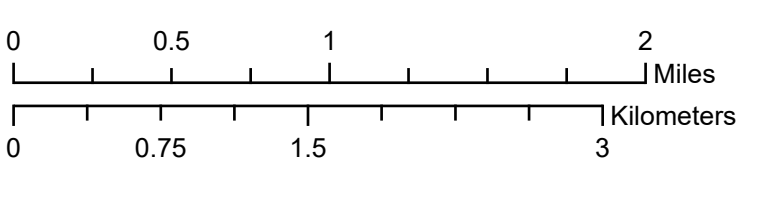
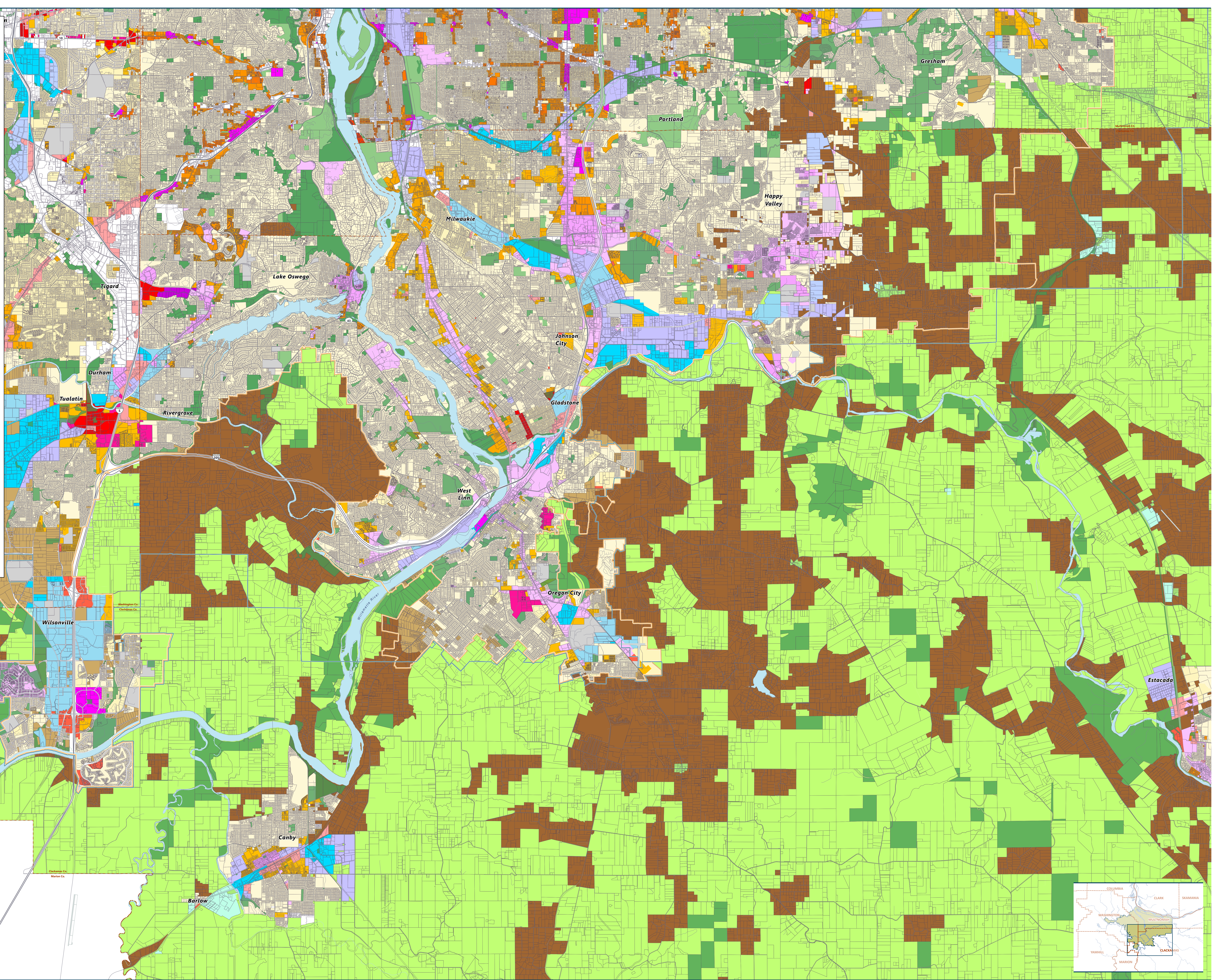


Legend

- Taxlots
- Metro jurisdictional boundary
- Urban growth boundary
- County boundary
- Park and/or natural area
- Zoning**
- Exclusive Farm or Forest Use
- Rural Commercial
- Central Commercial
- General Commercial
- Neighborhood Commercial
- Office Commercial
- Industrial Office
- Industrial Campus
- Heavy Industrial
- Light Industrial
- Multi Family (4-15 Dwelling Units per acre)
- Multi Family (16-20 Dwelling Units per acre)
- Multi Family (21-25 Dwelling Units per acre)
- Multi Family (26-30 Dwelling Units per acre)
- Multi Family (31-35 Dwelling Units per acre)
- Multi Family (36-45 Dwelling Units per acre)
- Multi Family (46+ Dwelling Units per acre)
- Mixed Use Residential (4-15 Dwelling Units per acre)
- Mixed Use Residential (16-20 Dwelling Units per acre)
- Mixed Use Residential (21-25 Dwelling Units per acre)
- Mixed Use Residential (26-30 Dwelling Units per acre)
- Mixed Use Residential (31-35 Dwelling Units per acre)
- Mixed Use Residential (36-45 Dwelling Units per acre)
- Mixed Use Residential (46-65 Dwelling Units per acre)
- Mixed Use Residential (66-100 Dwelling Units per acre)
- Mixed Use Residential (101-125 Dwelling Units per acre)
- Mixed Use Residential (126-700 Dwelling Units per acre)
- Public Facilities
- Parks & Open Spaces
- Rural Industrial
- Future Urban Development
- Rural Residential or Future Urban
- Single Family (1 Dwelling Unit per acre)
- Single Family (2 Dwelling Units per acre)
- Single Family (3 Dwelling Units per acre)
- Single Family (4 Dwelling Units per acre)
- Single Family (5 Dwelling Units per acre)
- Single Family (6 Dwelling Units per acre)
- Single Family (7 Dwelling Units per acre)
- Single Family (8 Dwelling Units per acre)
- Single Family (9 Dwelling Units per acre)
- Single Family (10 Dwelling Units per acre)
- Single Family (11 Dwelling Units per acre)
- Single Family (12 Dwelling Units per acre)
- Single Family (14 Dwelling Units per acre)
- Single Family (15 Dwelling Units per acre)
- Single Family (16 Dwelling Units per acre)



View source data at: <https://rlis-discovery-drcmetro.hub.arcgis.com/>

R L I S  
REGIONAL LAND INFORMATION SYSTEM



# Generalized zoning classifications

## Urban Clackamas County

DATA RESOURCE CENTER  
600 NE Grand Ave.  
Portland, OR 97232-2736  
drc@oregonmetro.gov  
503-797-1742

The information on this map was derived from digital databases on Metro's GIS. Care was taken in the creation of this map. Metro cannot accept any responsibility for errors, omissions, or positional accuracy. There are no warranties, expressed or implied, including the warranty of merchantability or fitness for a particular purpose, accompanying this product. However, notification of any errors are appreciated.