



Agenda

Meeting: Regional Waste Advisory Committee
 Date: Thursday, July 18, 2024
 Time: 8:30 a.m. to 10:30 a.m.
 Place: Zoom virtual meeting
 Purpose: *The purpose of the Regional Waste Advisory Committee is to provide input on certain policies, programs, and projects that implement actions in the 2030 Regional Waste Plan, as well as to provide input on certain legislative and administrative actions that the Metro Council or Chief Operating Officer will consider related to the implementation of the 2030 Regional Waste Plan.*

- | | | |
|------------|---|--|
| 8:30 a.m. | Welcome and Introductions | Marta McGuire
Metro |
| 8:35 a.m. | General Updates
<i>Purpose: Informational</i>
<i>Updates on the FY24-25 WPES Budget Approval and updates to RWAC.</i> | Marta McGuire
Rosalynn Greene
Metro |
| 8:45 a.m. | Bulky Waste Policy Project: Multifamily Collection Study Results
<i>Purpose: Informational</i>
<i>Staff will present the findings of the Multifamily Collection Study.</i> | Casey Mellnik,
Thomas Egleston
Rachel Chu
Metro |
| 9:30 a.m. | Garbage and Recycling System Facilities Plan – Council Policy Guidance Update
<i>Purpose: Informational</i>
<i>Provide an update on Phase 3 of the Garbage and Recycling System Facilities Plan and a summary of the policy guidance Metro Council provided in May that will guide the plan’s final stages of development.</i> | Estee Segal
Luis Sandoval
Metro |
| 10:15 a.m. | Consideration of meeting minutes | |
| 10:20 a.m. | Public Comment | |
| 10:30 a.m. | Adjourn | |

Upcoming RWAC Meeting: Thursday, August 15th, from 8:30 a.m. to 10:30 a.m.

For agenda and schedule information:

Carly Tabert: carly.tabert@oregonmetro.gov

To check on closure or cancellations during inclement weather please call 503-797-1700.

Metro's nondiscrimination notice

Metro respects civil rights. Metro fully complies with Title VI of the Civil Rights Act of 1964 that bans discrimination on the basis of race, color or national origin. For more information on Metro's civil rights program, or to obtain a Title VI complaint form, visit www.oregonmetro.gov/civilrights or call 503-797-1536.

Metro provides services or accommodations upon request to persons with disabilities and people who need an interpreter at public meetings. If you need a sign language interpreter, communication aid or language assistance, call 503-797-1536 or TDD/TTY 503-797-1804 (8 a.m. to 5 p.m. weekdays) 7 business days in advance of the meeting to accommodate your request.



Regional Waste Advisory Committee Schedule of Topics

Schedule of Topics | July to December 2024

Date	Topic	Regional Waste Plan	Decision Type
July 2024	<ul style="list-style-type: none"> Garbage and Recycling System Facilities Plan Bulky Waste Policy Project Regional Waste Advisory Committee Recruitment and Membership Update 	Goal 16 Goal 10	Consult Informational
August 2024	<ul style="list-style-type: none"> Recycling Modernization Act 	Goals 3, 5, 10, 14, 15,16	Informational
September 2024	<ul style="list-style-type: none"> Regional Waste Plan Progress Report Food Waste Policy Update 	Goals 1-19 Goal 10	Informational Informational
October 2024	<ul style="list-style-type: none"> Household Hazardous Waste Strategic Plan 	Goal 10	Informational
November 2024	<ul style="list-style-type: none"> Garbage and Recycling System Facilities Plan 	Goal 16	Consult
December 2024	<ul style="list-style-type: none"> Investment and Innovation Grants FY25-26 Budget Development 	Goals 15, 16	Consult

The schedule is subject to change.

REGIONAL WASTE ADVISORY COMMITTEE

Meeting Worksheet

PRESENTATION DATE: July 18, 2024 **LENGTH:** 35 mins

PRESENTATION TITLE: Bulky Waste Collection Study Results

DECISION TYPE: Informational

RELATED REGIONAL WASTE PLAN GOALS: Goal 10 Provide regionally consistent services for garbage, recyclables and other priority materials that meet the needs of all users.

PRESENTER(S): CASEY MELLNIK (SHE/THEY); TOM EGLESTON (HE/HIM); RACHEL CHU (SHE/HER)

PURPOSE OF PRESENTATION

- This presentation is an opportunity for the Regional Waste Advisory Committee to learn about the results of the Multifamily Bulky Waste Collection Study that recently occurred in partnership with the City of Gresham, WM, Gresham Sanitary Service, Community Warehouse and Trash for Peace.

Bulky Waste Collection Study Results

The Bulky Waste Collection Study took place from Oct. 1, 2023, through Jan. 19, 2024, at 39 multifamily properties in Gresham. The study provided valuable data points that will support further bulky waste program and policy development. Metro and local governments will use this data to support planning work in the next phase of the project.

The study found on average:

- Each multifamily unit generates 2-3 pounds of bulky waste per week or up to 155 pounds of bulky waste per year.
- Multifamily properties utilized the service 2-3 times per month with large properties utilizing the service more frequently than smaller properties.
- The estimated cost for the study to operate weekly was \$4.30 per month. The estimated cost for the study to operate once a month was \$2.00 per multifamily household per month.

ACTION REQUESTED

- Informational

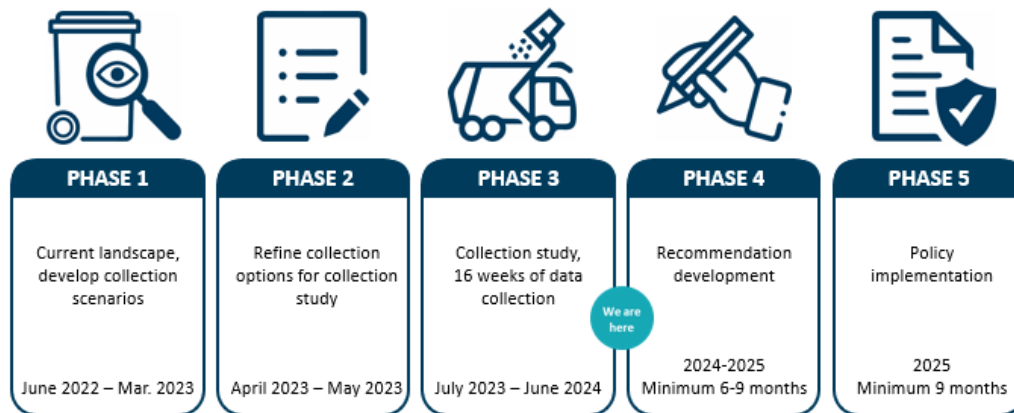
BACKGROUND

- 2030 Regional Waste Plan (RWP) action 10.5 directs the provision of consistent and regularly occurring bulky waste collection services with an emphasis on multifamily communities and lower income households. The Bulky Waste Policy Project builds on RWP Action 10.5 and previous Council action related to multifamily service standards by bringing together public and private partners to develop consistent, affordable, and convenient bulky waste collection services for multifamily households in greater Portland.
- Previously local government and Metro staff presented to RWAC in February and November of 2023 reporting the progress of the Bulky Waste Policy Project.

- The presentation marks the conclusion of Phase 3, the collection study.

Project Timeline

As shown below, the Bulky Waste Policy Project includes five phases of work. With the completion of the Bulky Waste Collection Study, phase three is now done.



QUESTIONS FOR CONSIDERATION

- What questions does RWAC have about the results of the Multifamily Bulky Waste Collection Study or the Single-Family Summary?

NEXT STEPS

- After phase four of the project, staff plan to return to RWAC in late-2024 or early-2025 to seek feedback on administrative rule proposals developed in collaboration with city and county partners to enhance bulky waste collection services throughout the region.

ATTACHMENTS

- Multifamily Bulky Waste Collection Study Executive Summary
- The Multifamily Bulky Waste Collection Study full report and Single-family Summary are available on [Metro's Website](#).

Multifamily Bulky Waste Collection Study

Executive Summary

June 10, 2024

Managing the collection and disposal of unwanted large household items, also called bulky waste, can be challenging and expensive. Bulky waste collection at multifamily properties includes additional complexity for residents and property managers, specifically: how to make the services clear and accessible to residents, where residents should place large household items out for disposal, and who is responsible for the cost of the collection.

Metro and local governments are working together to implement changes and additions to existing bulky waste services for residents living at multifamily properties. The purpose of the Multifamily Bulky Waste Collection Study was to gather data to better understand how much and how often bulky waste material was generated for collection and estimate the cost to operate a regular on-route bulky waste collection service.

Study Overview

The study was conducted in the City of Gresham and included 39 properties and 2,800 apartment homes or units. Data was collected for 16 weeks from October 2023 through January 2024. Each multifamily property received a weekly bulky waste pick-up service from their garbage and recycling collection company franchised by the City of Gresham. For each day the bulky waste routes operated, data was collected and reported by the collection companies. Key data points included material generation, frequency of utilization of the service, and disposal costs. Material characterization and opportunities for reuse were also part of the assessment.



Study Measures

- **Generation:** how much bulky waste is generated per multifamily household or dwelling unit.
- **Frequency of utilization:** how often multifamily properties placed items out for collection.
- **Cost:** average cost per household or unit to provide this study's on-route bulky waste collection at multifamily properties. *Includes costs related to Extended Producer Responsibility (EPR) & special handling considerations.*
- **Material characterization:** identifying the most common materials set out for disposal. *Includes EPR materials & materials requiring special handling.*
- **Reuse:** quantifying the amount of items that have the opportunity to be reused once they are set out for collection.

Results

Generation	
Average generation per multifamily household unit per week	Average generation per multifamily household unit per year
2 – 3 pounds	155 pounds

This amount of bulky waste material generation is similar to one mattress and one large chair each year per household.

Frequency of utilization	
Average number of times properties utilized the service	Larger versus smaller properties
2-3 times per month	Large properties utilized the service more frequently than smaller properties

Like other waste streams, the need for bulky waste collection service varies, with higher-utilization weeks and lower-utilization weeks.

Cost		
Estimated cost for the study to operate weekly	Estimated cost for the study to operate twice a month	Estimated cost for the study to operate once a month
\$4.30 per multifamily household per month	\$2.70 per multifamily household per month	\$2.00 per multifamily household per month

Many factors may impact the cost to provide bulky waste collection service, such as: size of a franchise area, number of multifamily properties and their unit counts, specific collection company operations, routing efficiencies, special materials that may avoid or incur additional disposal costs, and equipment investments.

Material characterization	
Most common large household items set out for disposal at multifamily properties	
Furniture (both upholstered and unupholstered)	Mattresses and box springs

Reuse
Assessing the opportunity for reuse through multifamily bulky waste collection
The reuse opportunity is greatest before items are set out at the point of collection. There are a small number of items that are gleaned from the collection point, likely by other residents.

This study took place in the fall and winter when the weather in Oregon greatly reduces the opportunity to reuse large items, particularly upholstered materials, during that time.

Using the results

The results specific to how much material is generated, how often it is generated, and the cost estimates can be used by local governments and collection companies to plan for future services in their jurisdictions. Results will be used by Metro to inform policy planning related to bulky waste collection service.

Also included in this study is qualitative information gathered through six interviews with property managers, conversations with the City of Gresham and the two collection companies that participated in the study.

Six property manager interviews – key takeaways

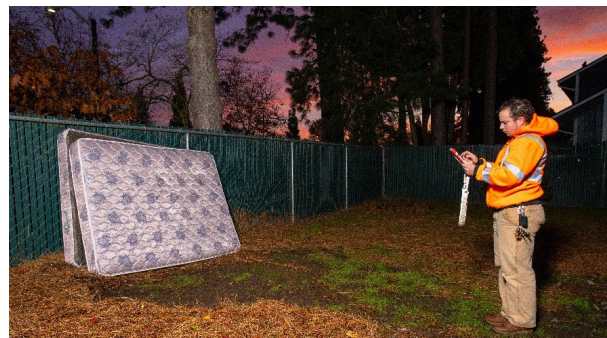
- Managing bulky waste is an ad hoc, expensive and time-intensive task, with collection needed anywhere from weekly to once per month.
- Having a consistent bulky waste collection during the study that residents knew about enabled residents to properly manage their bulky items, reduced conflict, and eased the burden on property managers.
- For future service planning, identifying the right location for bulky waste collection and enclosure design for each property will be helpful to dissuade illegal dumping and promote cleanliness of the property.

Conversations with City of Gresham and two collection companies – key takeaways

- A regionally consistent list of accepted materials will support residents to use the service. Flyers and other educational materials are an opportunity to remind residents what items are or are not considered bulky waste.
- Determining a designated location and clear signage at each property for bulky waste helps ensure residents and collection companies have safe and convenient access to store and collect items. Smaller properties with limited exterior space may face additional challenges.
- Engagement with property managers is important to ensure that the service functions well and is safe and accessible to residents.
- The types of equipment used to collect bulky waste is important when considering EPR covered materials such as TVs and mattresses, which cannot be mixed with other waste materials or lose recycling viability when disposed in compacting trucks.

What is bulky waste?

Bulky waste is a large household item that is unwanted and ready to be discarded by a household and does not fit inside the regular garbage or recycling receptacles. These items have the potential to be thrown away, recycled or reused. This term includes furniture, appliances, electronic devices, outdoor patio and garden items, miscellaneous household items and household vehicle items. This term does not include household hazardous waste, construction and demolition debris, remodeling debris, yard debris, standard recyclable material, gas cylinders, business waste, or any waste that can fit within the standard garbage receptacle.



REGIONAL WASTE ADVISORY COMMITTEE

Meeting Worksheet

PRESENTATION DATE: July 18, 2024 **LENGTH:** 20 mins

PRESENTATION TITLE: Garbage and Recycling System Facilities Plan – Proposed Investments

DECISION TYPE: N/A - Inform

RELATED REGIONAL WASTE PLAN GOALS: Goal 16: Maintain a system of facilities, from smaller recycling drop-off depots to larger full-service stations, to ensure equitable distribution of and access to services.

PRESENTER(S): Estee Segal, Luis Sandoval

PURPOSE OF PRESENTATION

Share an update on the Garbage & Recycling System Facilities Plan, including a preview of specific options for the facility and program investments to include in a draft plan, based on input and policy direction Metro Council provided at a workshop in May.

ACTION REQUESTED

Informational - this item is informational for RWAC members to understand how stakeholder input and Council direction has led to the facility and program investment options to be presented to Council on July 30.

BACKGROUND

[The Garbage and Recycling System Facilities Plan](#) will outline the future infrastructure investments and services to improve the existing garbage and recycling system. The plan will consider investment in current facilities – including Metro’s two transfer stations – and new facilities like reuse and recycling centers. The planning process includes five phases and is anticipated to be complete at the end of 2024.

In fall 2023, project stakeholders, along with Metro Council, were presented with [four scenarios](#) to address gaps and modernize the system through different combinations of regulation, facilities and investments. Comparing the scenarios brought forth larger questions about Metro’s role and how different policies could address gaps in the system.

In May 2024, Metro Council met to explore these underlying policy areas and provide direction on a set of investments. The workshop allowed Metro Council to explore their preferences in six policy areas that were embedded in the scenarios: community drop-off depots, reuse and repair, organics, commercial transfer stations, wet waste tonnage flow, and private facility regulation.

Councilors agreed that Metro should increase its role in filling gaps in the solid waste system by focusing on providing accessible services in the region that are not widely supported by the private sector (such as reuse, recycling, self-haul and household hazardous waste).

Council also provided specific direction for six policy areas that can prioritize waste reduction and address geographic inequities while maintain affordable services:

- **Community drop-off depots:** Metro should build a network of accessible community drop-off depots for reuse, recycling, household hazardous waste and self-haul garbage.
- **Reuse and repair:** Metro should increase its financial support for the reuse sector and partner with reuse organizations to plan and operate new facilities.
- **Organics:** Metro should invest and partner with the private sector to increase access and capacity to transfer and process organics to end markets.
- **Commercial transfer stations:** Metro should consider reducing its role in processing and transferring commercial waste at its two existing transfer stations.
- **Wet waste tonnage flow:** Metro should assess the multiple impacts of reducing the amount of wet waste flowing to Metro facilities.
- **Private facility regulations:** Metro should assess wet waste regulation options.

At the July 30, 2024 work session, staff will present options and recommendations in the form of specific facility and program investments, along with their targets, outcomes and costs, that reflect the direction and preferences Council provided in May.

The project team has provided previous updates to the Regional Waste Advisory Committee on this project in February 2024, October 2023, August 2023, July 2023, April 2023, December 2022, and October 2022.

QUESTIONS FOR CONSIDERATION

- Do you have priorities or preferences for the options as presented?
- Do you have questions about the projects' next steps?

NEXT STEPS

- Metro Council work session, July 30
- Share summary of planned investments with project stakeholders in September
- Bring draft plan to Council in October
- Bring final plan for resolution, December, and adoption, January

ATTACHMENTS

Attach A – SFP values and outcomes summary flyer



Garbage and Recycling System Facilities Plan

Phase 1: Developing values and outcomes

Overview

Metro's 2030 Regional Waste Plan set a vision to reduce waste, protect the environment and human health and provide excellent services for everyone. Facilities such as transfer stations or repair, reuse and recycling centers play a key role in managing the things we all throw away.

As the greater Portland region grows, the Garbage and Recycling System Facilities Plan will look at where we can invest in public, private or non-profit facilities or services to make our system work better for everyone.

What is guiding the development of this plan?

The values and racial equity principles of the 2030 Regional Waste Plan guide this work. The plan also includes a new value reflecting Metro's commitment to seek Tribal government consultation. From these values, staff created desired outcomes specific to this new plan. Together, the values and outcomes will steer the development of an investment plan that includes:

- a focus on reducing waste through infrastructure improvements
- improved quality and access to services
- affordable services for everyone

These values and outcomes will guide evaluation of service gaps and investment options and will be used to measure the overall success of the plan over the next 20 years.

The values and outcomes were shaped with input from multiple groups, including Metro Council and four advisory committees: Metro's Committee on Racial Equity, the Metro Policy Advisory Committee, the Regional Waste Advisory Committee and a newly formed community advisory group.

A focus on waste reduction

This plan will outline the infrastructure investments necessary to help the region reuse, repair and recycle more materials in order to reduce the negative health and environmental impacts of waste.

New facilities could help the region recover more waste through recycling, composting or energy recovery, instead of sending it to the landfill.

We can have an even greater impact on health and the environment by building infrastructure to reuse and repair more. Reusing and repairing materials not only avoids the health and environmental impacts from landfilling, but helps reduce the need to manufacture new products.



Garbage and Recycling System Facilities Plan

Summarized Values and Outcomes:



Healthy people and environment

- Minimize the negative health and environmental impacts of facilities by incorporating innovative sustainability practices as outlined in Metro's green building policy
- Develop good neighbor agreements between communities and facilities



Resource conservation

- Identify the items the plan needs to target for reuse, repair, recycling or composting – and the infrastructure needed to manage them
- Increase access to donate and buy used items
- Provide workspace, reclaimed materials and other types of support to regional reuse and repair initiatives



Environmental literacy

- Provide learning opportunities at facilities through tours, displays, exhibits, viewing rooms
- Develop programming with organizations focused on waste prevention and environmental justice



Economic well-being

- Provide jobs with living wages, benefits, and safe work environments
- Recruit and retain workers who are underrepresented in the garbage and recycling industry
- Create opportunities within the garbage, recycling, reuse and repair sectors for people with barriers to employment



Excellent service and equitable system access

- Develop a network of facilities to provide equitable system access
- Establish direction for Metro transfer stations and Metro solid waste facilities
- Keep facility-based services affordable for low-income customers
- Make public facilities accessible for people with disabilities and people who rely on transit
- Develop multilingual and culturally relevant communication tools for facilities



Operational resilience

- Develop funding options that advance waste reduction and affordability goals
- Design efficient facilities to serve people quickly and recover useful materials
- Identify facility investment needs for natural hazard resilience
- Shape garbage and recycling system with key elements from regional transportation and land use planning efforts



Community restoration

- Evaluate potential facility benefits and burdens using a climate justice lens
- Incorporate the needs of marginalized communities in the planning process



Community partnerships

- Create a Community Advisory Group that works with staff to develop the plan
- Involve community-based organizations in decision-making of facility projects
- Partner with Black, Indigenous, People of Color Communities and immigrant-led organizations to support reuse and repair projects at new facilities



Community investment

- Develop Community Benefits Agreements to ensure benefits are equitably shared and address community needs
- Provide community gathering spaces such as parks and meeting rooms at public facilities that serve residential customers



Tribal consultation

- Seek to consult with Tribal governments to advance shared priorities such as cultural and historic resource protection, environmental protection and resources conservation.
- Establish partnerships with Tribes through government-to-government engagement

For more information, visit
[oregonmetro.gov/
systemfacilitiesplan](https://oregonmetro.gov/systemfacilitiesplan)