



Metro

2030 Regional Waste Advisory Committee

Equity, health and the environment

Inaugural Meeting| October 31, 2019

Today's discussion

Introductions

Metro Overview

Leading with Racial Equity

Committee Purpose and Agreements

Closing and Adjourn





Introductions

Partner Introductions

Break into pairs or groups of three and Discuss the questions.

Then, we will reconvene and you will use the answers to introduce your partner to the committee.

1. What was your main interest in serving on the committee?
2. What are you most looking forward to working on as a part of this committee's work?
3. What is your favorite candy or sweet treat?



Metro Overview

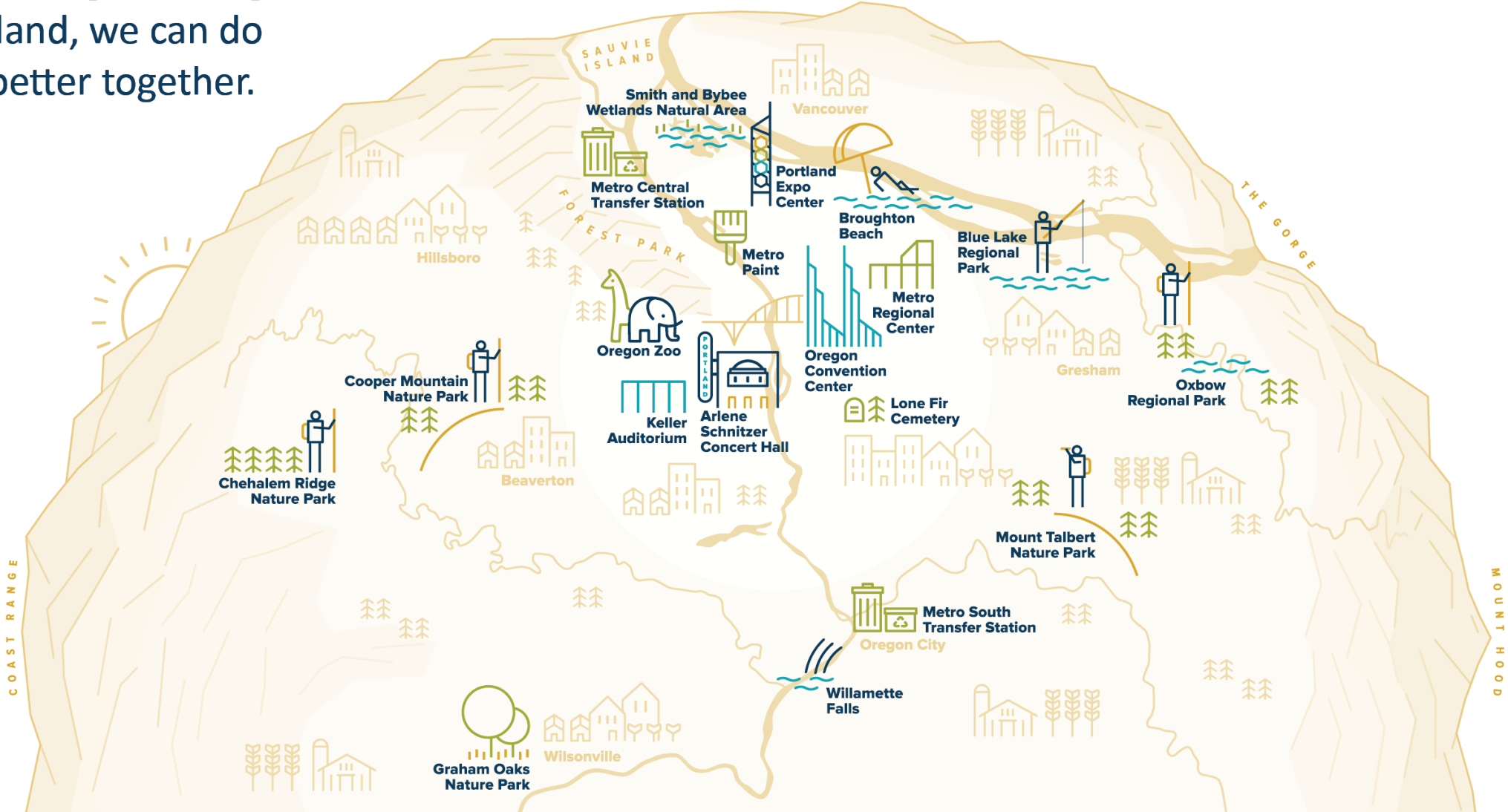


Metro

Across greater Portland,
in 24 cities and 3 counties,
there's one regional government
that brings us all together.

Hello, we're Metro.

In a metropolitan region as big as greater Portland, we can do a lot of things better together.





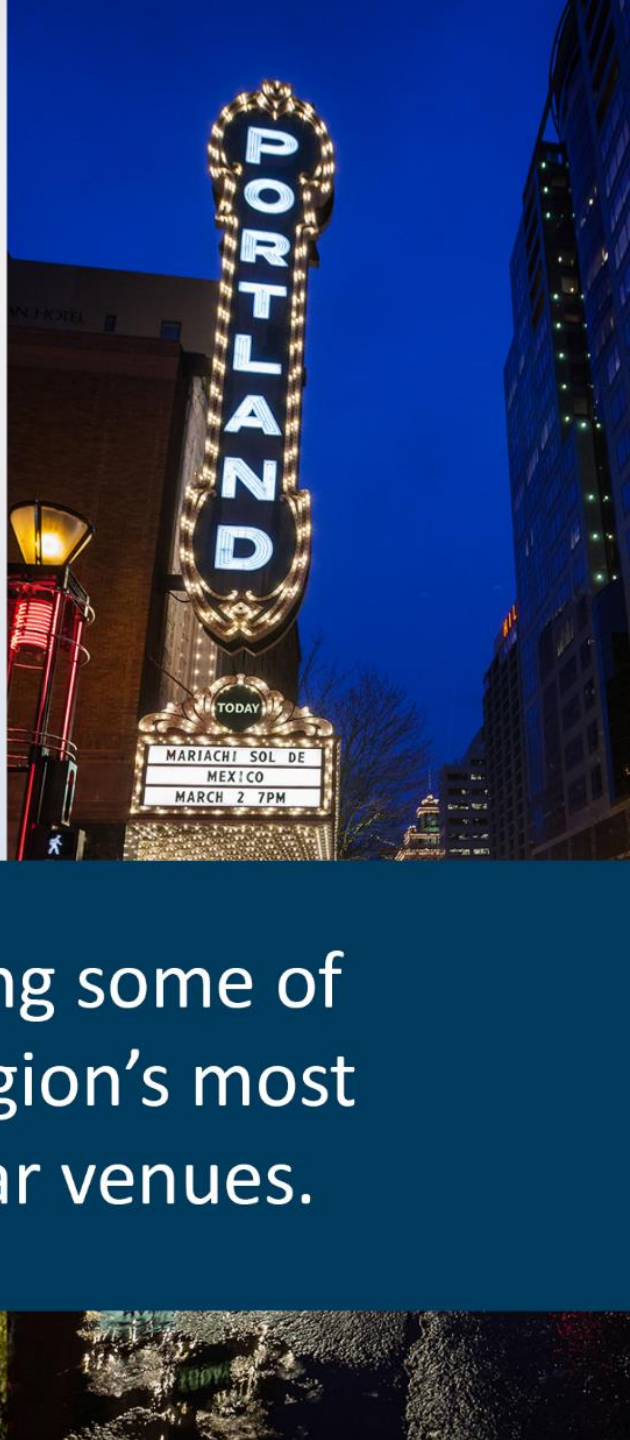
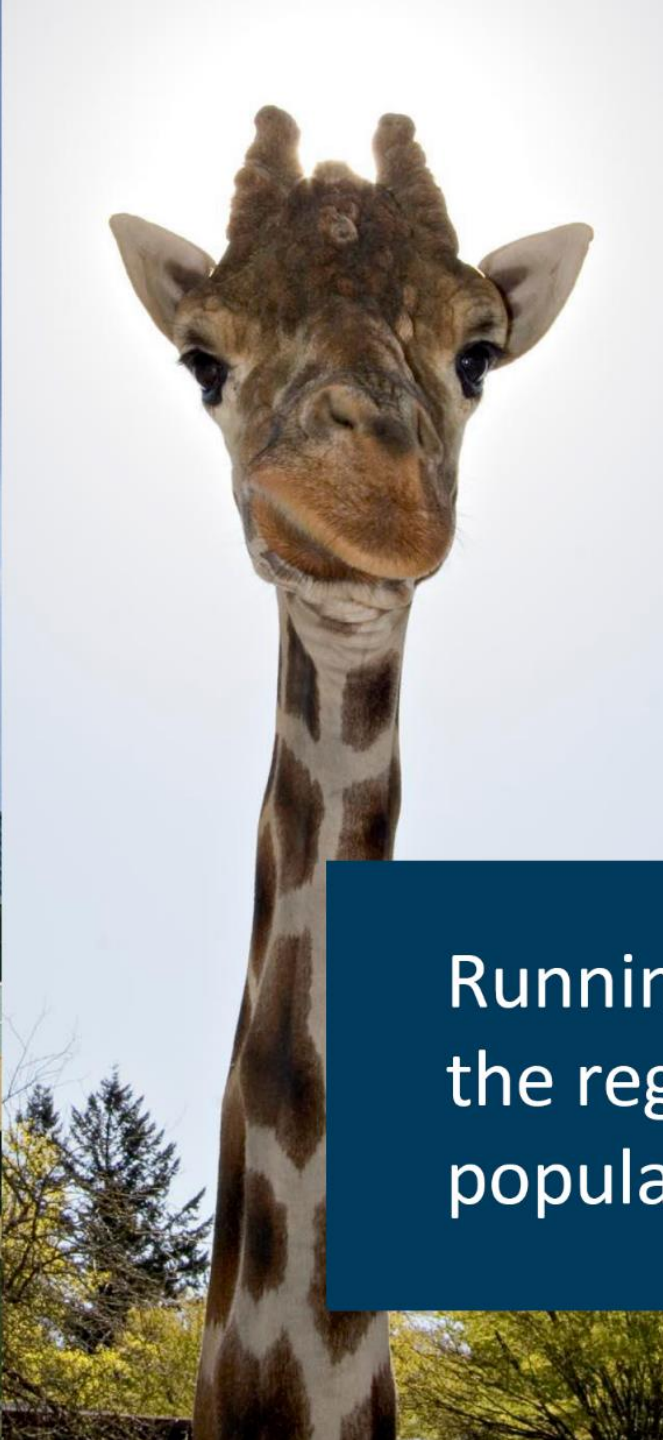
Like creating a unique
park system with
nature at its heart.



Shaping communities
people want to call
home.



Advancing an innovative garbage system.

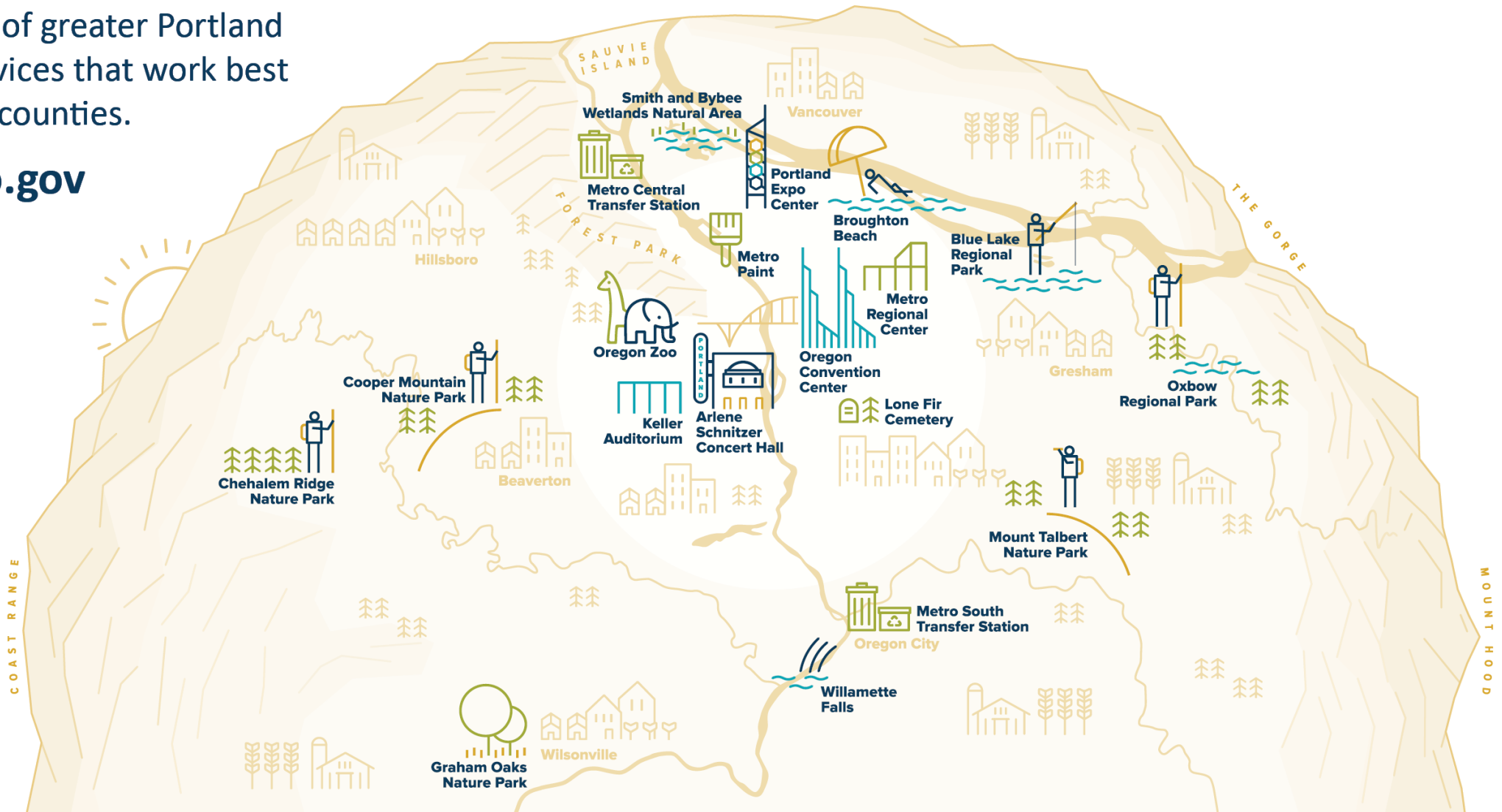


Running some of the region's most popular venues.

Hello, we're Metro.

Metro brings people together to shape the future of greater Portland and provides services that work best across cities and counties.

oregonmetro.gov



. . . and so are you.

We're hiring. Join us.
oregonmetro.gov/jobs

Get involved.
oregonmetro.gov/volunteer
oregonmetro.gov/committees
oregonmetro.gov/contracts
oregonmetro.gov/grants

Let's talk.
Subscribe to Metro News
oregonmetro.gov/news
oregonmetro.gov/subscribe

Follow oregonmetro



Shape the future.
oregonmetro.gov/participate
optinpanel.org



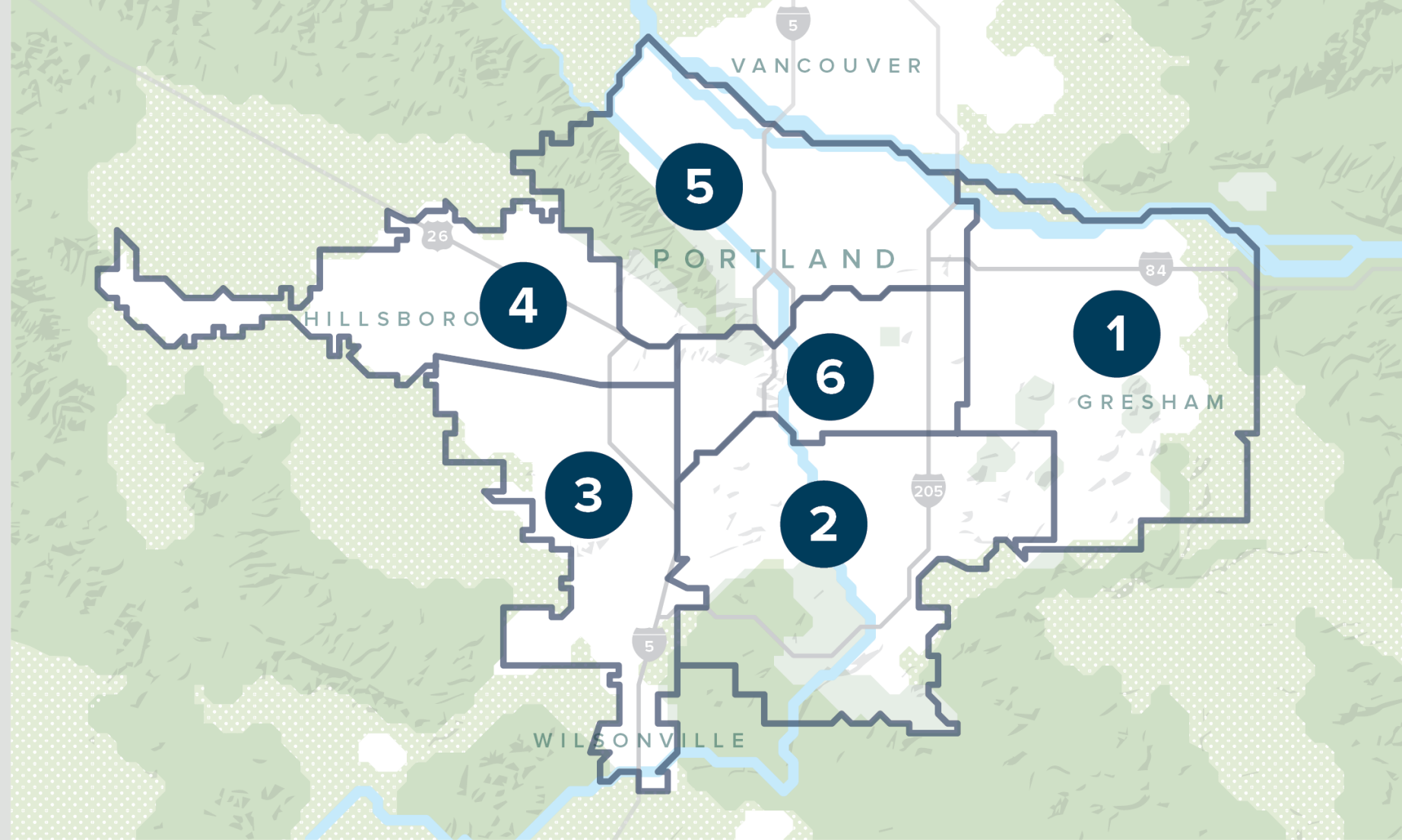


Metro Council

Sam Chase, District 5; Shirley Craddick, District 1; Juan Carlos González, District 4; Council President Lynn Peterson; Craig Dirksen, District 3; Christine Lewis, District 2; Bob Stacey, District 6;

Serving greater Portland

Metro serves more than 1.5 million people in Clackamas, Multnomah and Washington counties. The agency's boundary encompasses Portland, Oregon and 23 other cities – from the Columbia River in the north to the bend of the Willamette River near Wilsonville, and from the foothills of the Coast Range near Forest Grove to the banks of the Sandy River at Troutdale.



Metro Council

Council President Lynn Peterson; Shirley Craddick, District 1; Christine Lewis, District 2; Craig Dirksen, District 3; Juan Carlos González, District 4; Sam Chase, District 5; Bob Stacey, District 6; Metro Auditor Brian Evans



Metro

Arts and events
Garbage and recycling
Land and transportation
Oregon Zoo
Parks and nature





Leading with Racial Equity



a little history

Regional Waste Advisory Committee

October 31 - 2019



"Most of the time they'd call us boys," he says. "Or we'd get on the bus and they'd say 'look at that old garbage man.' And I knew I wasn't no garbage man. I just worked in garbage."



Garbage Truck Drivers, Local 220. Picnic, Dellwood Park, July 10, 1935.



SANITARY TRUCK DRIVERS

LOCAL 220. PICNIC. BLUE LAKE PARK JULY 13, 1952.





DeMartini P D 890 Tenino av
 DeMartini Ralph 2603 52d SE
 Derr Adam 791 Grand av N
 Derr Jno 790 E 10th N
 Fink Jacob 822 E 8th N
 Gamboro Paul 462 E 32d
 Glanz David 750 E 11th N
 Glanz Jno 877 Mallory av
 Helzer H H 759 Mallory av
 Helzer Jno 835 Mallory av
 Helzer Peter 500 Beech
 Henkel Peter 761 E 6th N
 Hinkel Jno 773 E 11th N
 Hohnstein Conrad 837 Garfield av
 Hohnstein Geo 867 Rodney av
 Kildow G H 908 Mallory av
 Klaus Conrad 786 E 10th N
 Klaus Jno 786 E 11th N
 Klaus Peter 774 E 13th N
 Knippel Geo 790 E 12th N
 Knippel Henry 758 E 7th N
 Knippel Henry 929 E 15th N
 Kniss Jno 427 Stanton
 Kreick Wm 767 E 11th N
 Krieger Henry h 560 Mason
 Kruger Conrad 773 E 9th N
 Lehl Philip 763 Rodney av
 Lehr Jno 855 E 15th N
 Miller Henry 514 Failing
 Miller Henry 761 E 11th N
 Miller Jno 500 Failing
 Miller Jno 761 E 11th N
 Miller Louis 880 E 10th N
 Nehl Peter 753 E 11th N
 Passadora Gustafo 302 E 11th
 Polli Edw 411 E 45th
 Ray Alex 844 E 29th
 Rigotti Camilo 389 E 45th
 Ross Geo 857 E 13th N
 Rueck Geo 758 E 10th N
 Sauer Jno 793 E 7th N
 Schaefer Philip 761 E 14th N
 Scheideman Jno 834 E 12th N
 Schleiger Lorenz 806 E 11th N
 Schleining Adam 805 E 13th N
 Schleining Jno 756 E 13th N
 Schiltt Peter 786 Grand av N
 Schmeer Conrad 833 E 7th N
 Schmeer Geo 765 E 11th N
 Schmeer Geo 771 E 14th N
 Schnell Geo 827 E 7th N
 Schnell Ludwig 840 E 8th N
 Schuessler Jacob 799 E 11th N
 Schwartz Geo 806 E 8th N
 Schwartz Henry 804 E 8th N
 Sinner Peter 396 Stanton
 Spady Geo 512 Beech
 Spreler Henry 764 E 12th N
 Traut Henry 568 Beech
 Traut Jno 764 E 10th N
 Traut Jno 853 E 13th N
 Traut Nick 758 E 13th N
 Urbach Conrad 799 E 13th N
 Wacker Geo 393 Stanton
 Wacker Henry 765 E 12th N
 Wacker Jno 763 E 12th N
 Walker Henry 757 E 10th N
 Weber Henry 785 E 12th N
 Weizel Henry 769 E 12th N

Alberta Sanitary Service

Gresham Sanitary Service

Mel Deines Sanitary Service

Dan Walker Disposal

Deines Brothers Sanitary Service (now Hoodview & Recycling)

John P. Lehl (now Waste Management of Oregon)

Oak Grove Disposal (now Waste Management of P. Deines Sanitary Service)

Gaylen Kiltow Sanitary Service

Rossman Sanitary Service (now Republic Service)

Borgens Disposal

Lehl Disposal

Miller's Sanitary

Mohr Refuse

Montavilla Sanitary Service

John G. Scheideman

Trout Brothers Sanitary

Wacker Sanitary

Walker Garbage Service

Weber Disposal

Weitzel & Son Refuse

Fred Wunsch Sanitary Service

Victor Yuckert

Arrow Sanitary, Inc. (503) 257-1331

City Sanitary (503) 760-2412

Elmer's Sanitary Service (503) 287-3068

Gruetter Sanitary Service (503) 282-4490

Heiberg Garbage Service (503) 794-8212

Lehl Disposal, Inc. (503) 282-6257

Portland Disposal and Recycling (503) 281-8736

Republic Services of Lake Oswego (503) 636-3011

Sunset Garbage Collection (503) 774-4122

Wacker Sanitary Service (503) 658-3347

Walker Garbage Service, Inc. (503) 531-6330

Waste Management (800) 808-5901



“It was pretty rough when we first come here about that "boy" stuff. Yeah, we couldn't drink out of the fountains downtown. It was that way in the '40s. We couldn't go in the park bathroom, right in front of the courthouse. They even had signs to let you know.”



LOCAL 220. PICNIC. BLUE LAKE PARK JULY. 13. 1952.

Group Discussion

- How does this case study of Odel Butler, shed light on why Metro's 2030 RWP leads with racial equity?
- When considering institutional and structural racism, is it enough to simply provide equal access to systems and services that have excluded certain groups for generations?
- What are some other examples of how people of color, poor people, or other disenfranchised groups are excluded from the garbage and recycling system and or it's services?

Leading with Racial Equity


June 2016



Strategic plan to advance racial equity, diversity and inclusion

oregonmetro.gov

Internal facing: Focus on advancing racial equity, diversity and inclusion

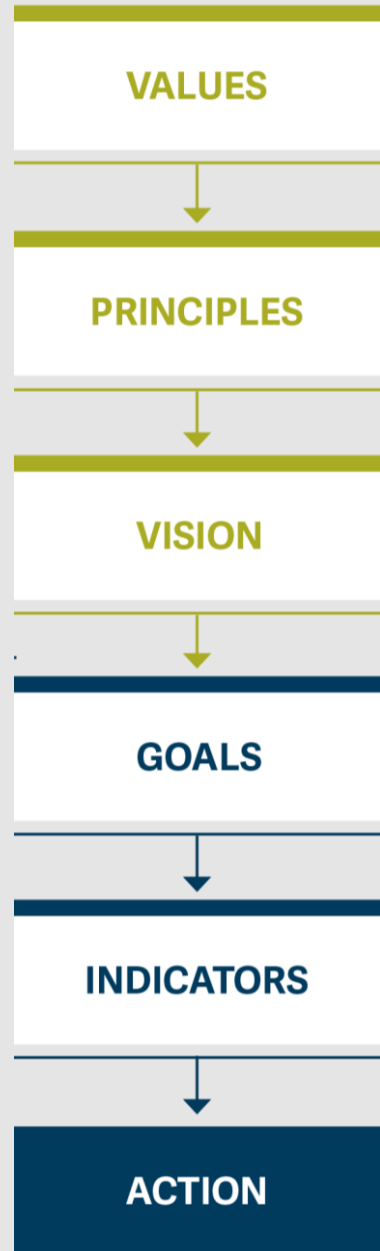


Draft 2030 Regional Waste Plan

Equity, health and the environment

External facing: Focus on advancing equity, health and environment for the region

Regional Waste Plan elements



GOAL AREAS

- Shared Prosperity
- Product Design and Manufacturing
- Product Consumption and Use
- Product End-of-Life Management
- Disaster Resilience

Plan principles

Community Restoration

Take action to repair past harm and disproportionate impacts caused by the regional solid waste system.

Community Partnerships

Develop authentic partnerships and community trust to advance the plan vision.

Community Investment

Emphasize resource allocation to communities of color and historically marginalized communities within the regional solid waste system.



Community Restoration

Examples in this room today -

- Acknowledging historical impacts passed from generation to generation within communities.
- Committing to building a greater awareness of equity among providers of garbage and recycling services.
- Actively including communities that have been historically marginalized from decision-making processes.

More to come -

- Equitably distributing costs and benefits, taking into account historical and system impacts (cleanup programs).
- Valuing indigenous and cultural knowledge about using resources sustainably. (education services)



Community Partnerships

Goal 11: Address and Resolve community concerns and service issues.

Actions

11.4 Provide services to clean up dumped garbage on public property, prioritizing communities with greatest need.

11.6 Implement garbage and recycling collection services for people experiencing homelessness.

Metro Bag Pilot

- 8 partnerships across region
- success is defined by partners
- camp steward program



Community Investment

RID Patrol Work Transition Program:

- Making investment decisions in partnership with communities (Constructing Hope, POIC, Rebuilding Women First)
- Investing in impacted communities through education and financial resources
- Eliminating barriers to employment
- Addressing goals 1, 3, 4



Example of future goal/action work

- 10.2: Implement minimum service levels or performance standards for all collected materials for multifamily and commercial tenants.
- 14.5 Evaluate alternative models for collection, processing and transfer services to identify which would deliver the best environmental, financial, efficiency and equity outcomes.
- 15.5 : Facilitate the permitting of composting facilities to process mixed residential yard debris and food scraps, while ensuring minimal impacts on neighboring communities.





Committee Purpose and Overview

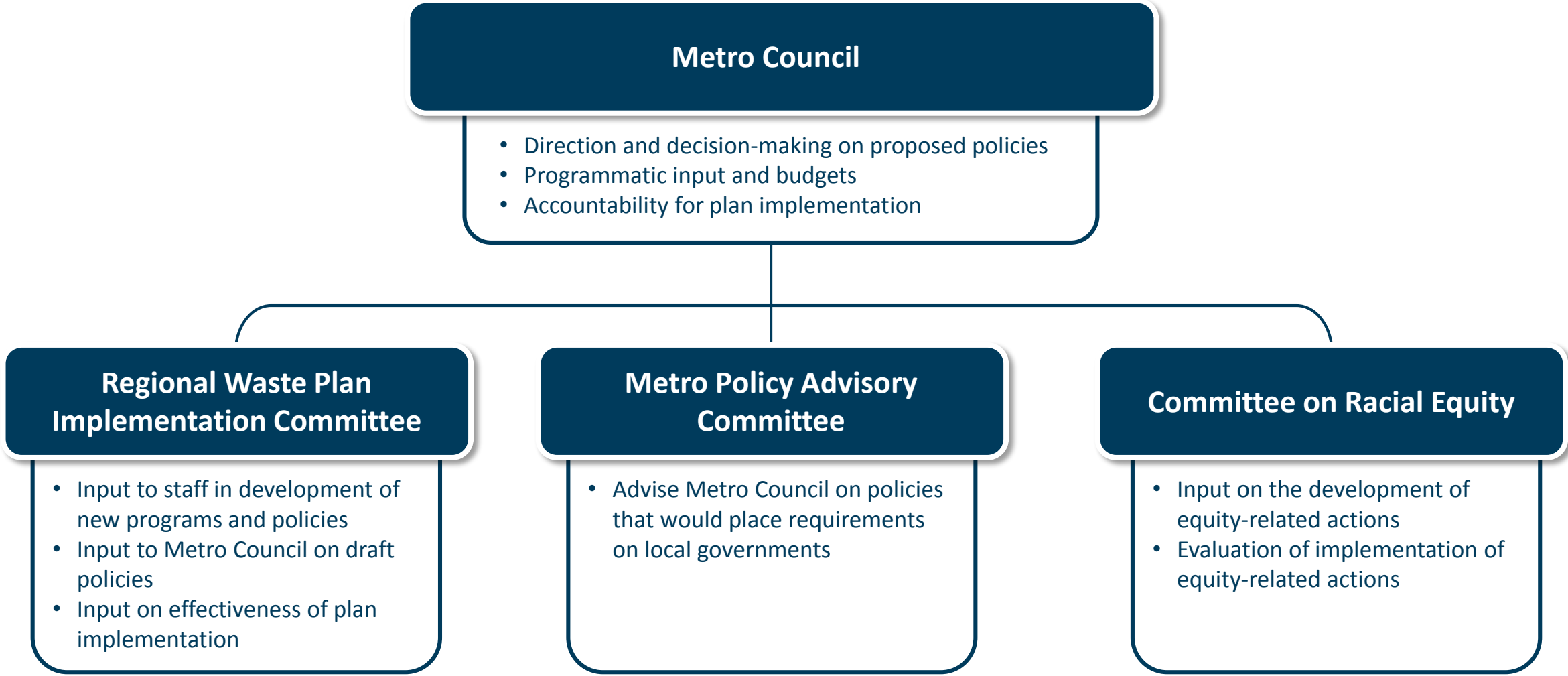
Committee Purpose

- Provide input on certain legislative and administrative actions that the Metro Council or Chief Operating Officer will consider related to implementation of the 2030 Regional Waste Plan.
- Provide input on certain policies, programs and projects that implement actions in the 2030 Regional Waste Plan.
- Review and provide input on the status of implementation of the 2030 Regional Waste Plan.

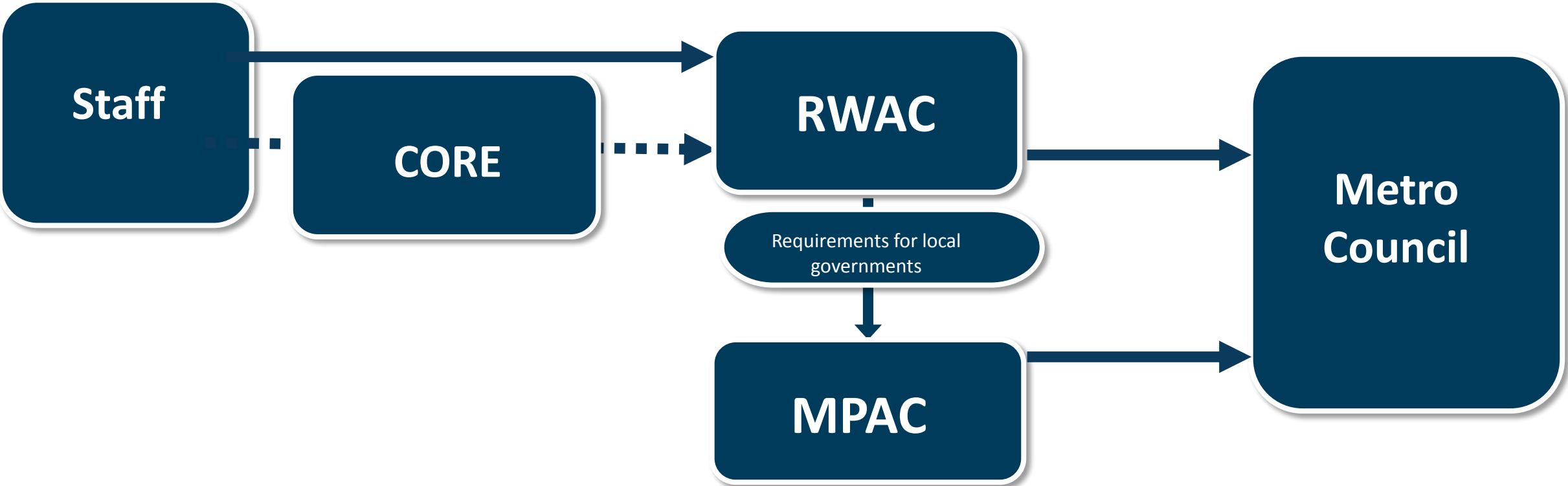
Draft 2030 Regional Waste Plan

**Equity, health and
the environment**

Oversight Framework



Committee Relational Framework



Meeting Procedures

Meeting Formalities

Open to public attendance

Documentation of proceedings

Communication of committee
input

Meeting Overview

Call to order

Review of minutes

Discussion

Public comments



Cooperative Learning Activity

How will we work together?

As a team of 3 or 4, create responses to the questions on the worksheet.

Each team will have **20** minutes to discuss and answer the four questions.

The roles:

- **Facilitator**: Makes sure that everyone has had the opportunity to voice their opinion and keeps the group on task.
- **Recorder**: Takes notes on this document during the group discussion.
- **Timekeeper**: (optional) Ensures that the group answers all three questions within the set amount of time.
- **Reporter**: Presents the group's responses to the entire cohort. (time permitting)

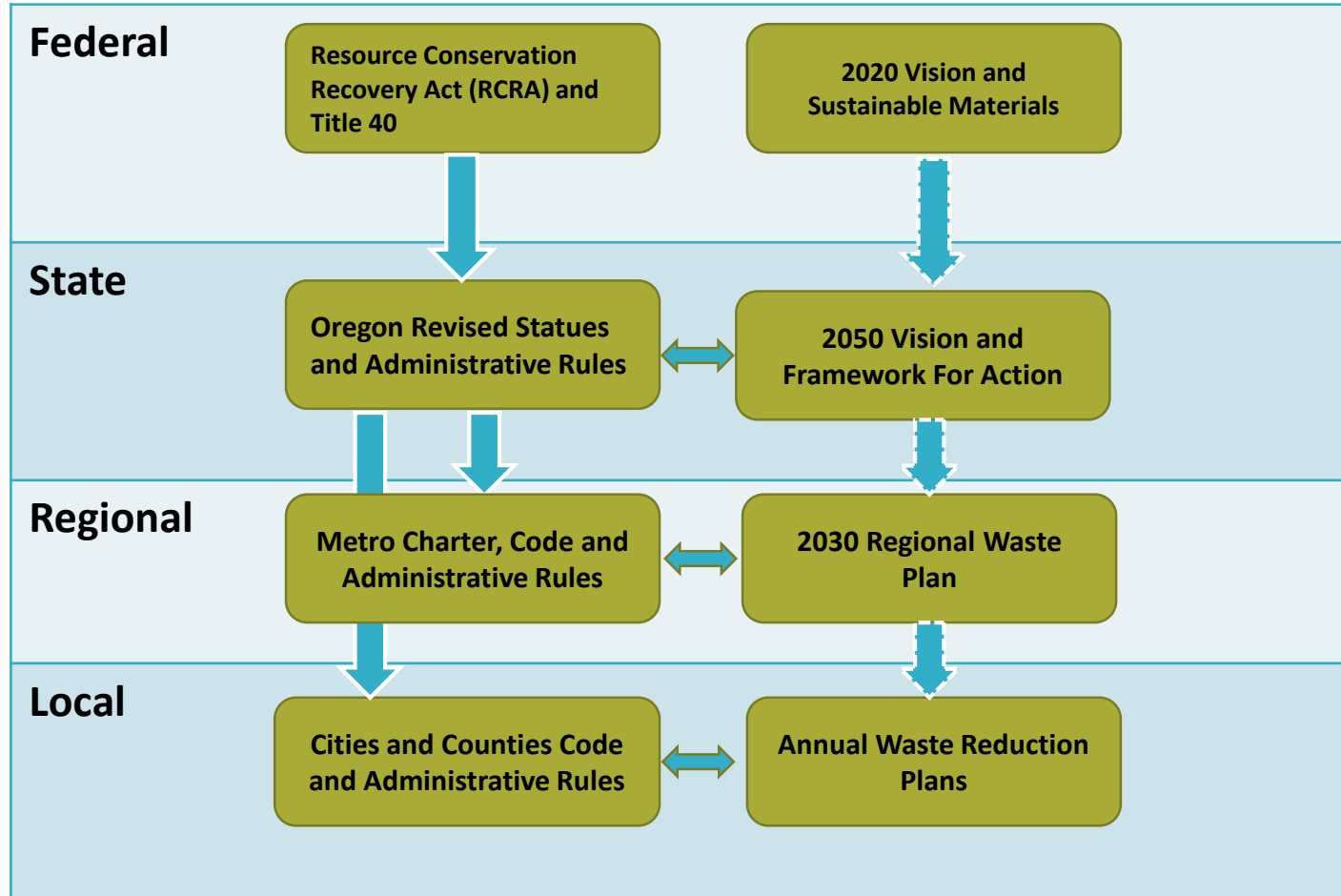


Metro

Thank you.



Policy Framework





Metro

2030 Regional Waste Advisory Committee

Equity, health and the environment

Inaugural Meeting| October 31, 2019