

Welcome

Garbage and Recycling System Facilities Plan

Garbage and Recycling
Community Advisory Group

Meeting #17
Sept. 10, 2024



Agenda

Welcome and check-in

Current direction from Council

Individual reflection and writing time

Pair discussion

Larger group share-out

Wrap-up time



Check in

- Name, gender pronouns
- Do you have a favorite restaurant in the area? Or try anything new recently that was good?

Group Agreements

Be brave

**Speak from your
experience**

**Take care of
yourself**

**Embrace
vulnerability**

**Don't stay
confused**

**Take space,
make space**

**Accept
non-closure**

**Speak up for
yourself**

**Offer input
in different ways**

Current direction from Council



Garbage and Recycling System Facilities Plan

- Sets 20-year vision and blueprint for investments to improve the garbage and recycling system
- Focused on waste reduction, increased access, and affordability
- Allows projects, large and small, to move forward to be further planned or built
- Identifies areas where more study, analysis and discussion are needed



Community drop-off depots

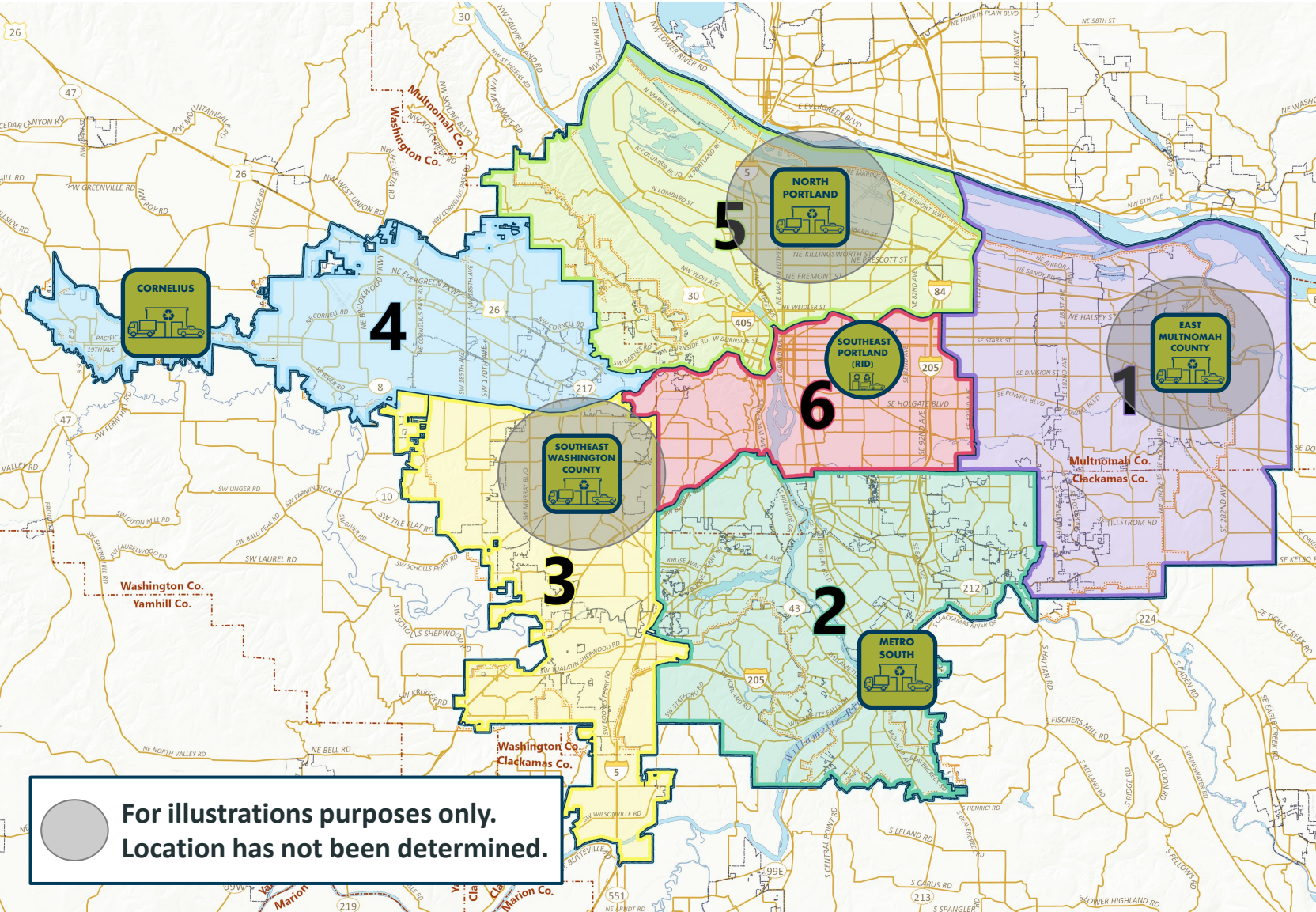
Build accessible self-haul depots for reuse, recycling, household hazardous waste and garbage



Community drop-off depots



Community drop-off depots



Share of people within 20-minute drive of nearest depot

Baseline



40%

Reuse, recycling and composting tons per year



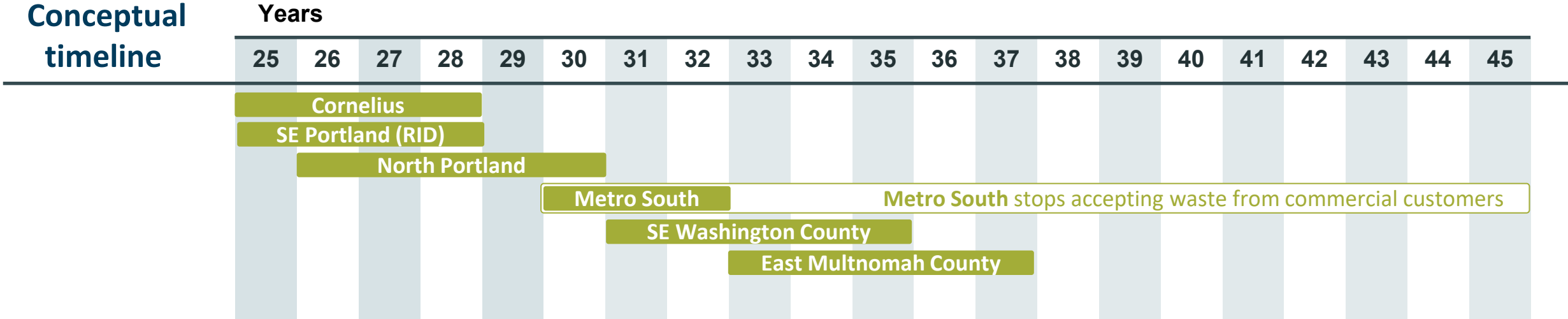
Metro depots per 250,000 people

Baseline



0.3

Community drop-off depots



Total estimated capital costs
 (in 2024 dollars)

\$199 million

Driving time access
 (% people within 20 min)

98 percent

Reuse, recycling and composting per year

21,000 tons

Before continuing: questions or comments?

Reuse and repair

Increase financial support for reuse sector and partner with reuse organizations to plan and operate new facilities



Reuse and repair



Reuse warehouse

Capital costs

\$16 million

Reuse tons

2,700 per year

Reuse mall

Capital costs

\$21 million

Reuse tons

N/A

Sustainable funding for reuse pilot program already in progress

Before continuing: questions or comments?

Organics

Invest and partner with the private sector to increase access and capacity to transfer and process organics



Organics

- Improve regional transfer and processing capacity
- Invest in maintaining Metro Central as a regional organics hub
- Develop additional hubs through public-private partnerships

Metro Central

Capital costs

\$30 million

Organics tons

(increase from baseline)

17,000 per year



Before continuing: questions or comments?

Commercial transfer stations

Consider reducing Metro's role in processing and transferring waste from commercial haulers at its two transfer stations



Commercial transfer stations

Follow a phased approach to relocate commercial waste from Metro South Transfer Station.

Phase 1: Determine process and goals to authorize a new or existing facility to take commercial waste.

Phase 2: If phase 1 does not meet goals set by Metro Council, develop public-private partnership to site/design/build a new facility to take commercial waste.



Before continuing: questions or comments?

Wet waste tonnage flow

Private facility regulation

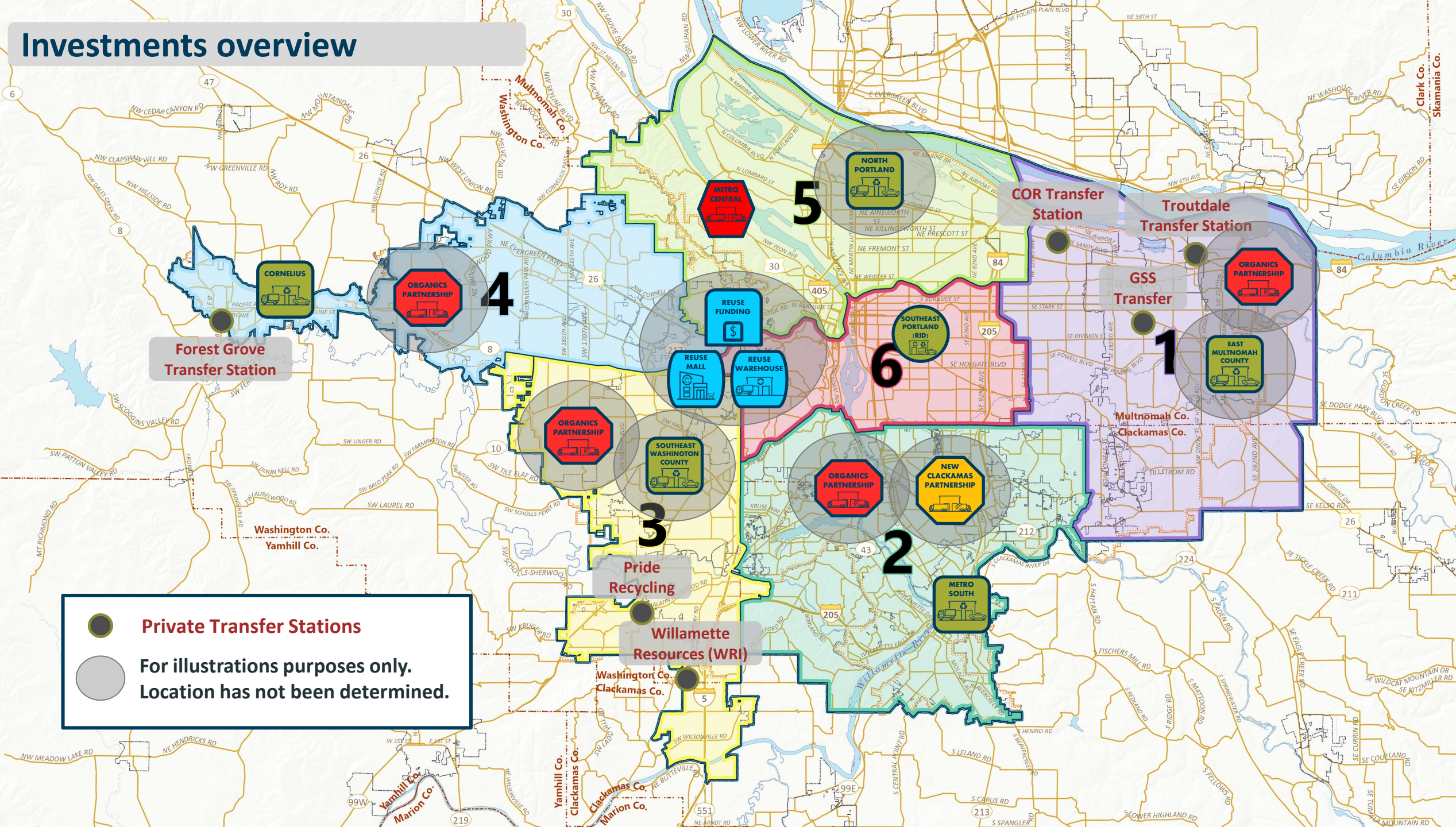


Starting this fiscal year, staff begin to evaluate and share with Metro Council:

- Impact of lowering or removing Metro tonnage guarantee, including evaluation of wet waste tonnage allocation program
- Options for private facility regulation to best serve the public interest

***Before continuing:
questions or comments?***

Investments overview



Forest Grove Transfer Station

Private Transfer Stations

For illustrations purposes only. Location has not been determined.

Pride Recycling

Willamette Resources (WRI)

COR Transfer Station

Troutdale Transfer Station

GSS Transfer

5

4

6

1

3

2

Summary of benefits

- **Increased access:** 90% population within 20 minutes of a depot
- **Tons recovered:** 63,800 per year
- **Addresses existing service gaps for:** Household hazardous waste, hard to recycle items and large household items for reuse
- **Public-private partnerships:** Increased investment for reuse, commercial and organic waste



Investments overview

Estimated capital costs
(in 2024 dollars)

Capital infrastructure projects

Community drop-off depots	Network of 6 community drop-off depots	\$199 million
Reuse and repair	Reuse warehouse and mall	\$37 million
Organics	Metro Central organics hub	\$30 million
Commercial transfer stations	Clackamas public-private partnership	\$12 million
TOTAL		\$278 million

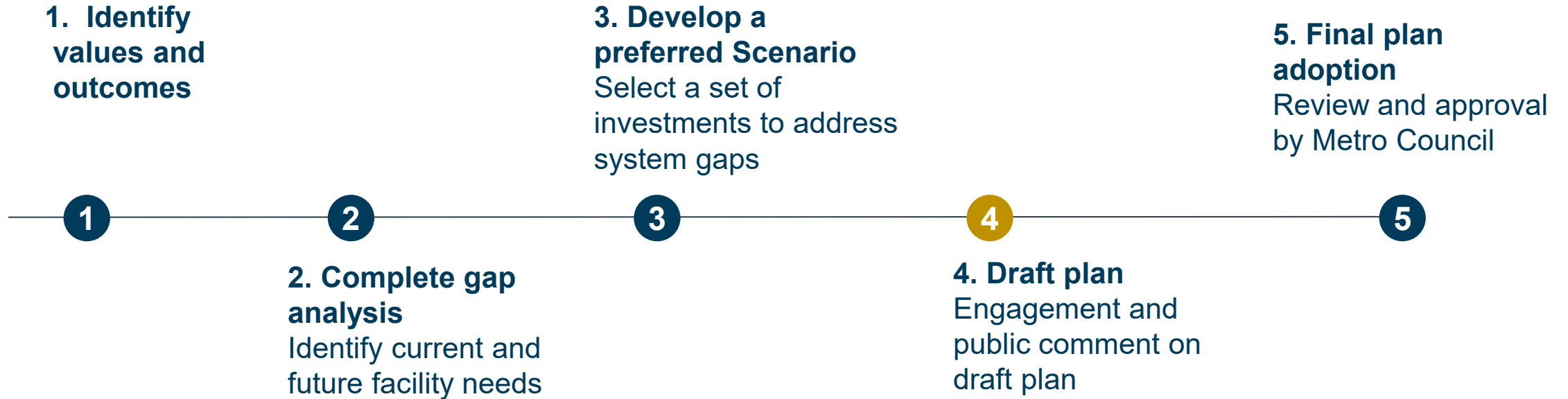
\$1.50 - \$2.00 estimated increase to average monthly single-family bill

Proposed financing approach

- Financed through revenue bonds, with debt paid-off over 20-years
- \$1.50 - \$2.00 estimated increase to average monthly single-family garbage bill



What's next



August to November 2024

- Targeted engagement with community, local government and industry partners
- Follow-up to regional advisory committees
- **Public survey and project updates to invite public comment on draft plan (Sept - Oct)**

Reflection time and discussion



Individual reflection time (10 min)

- **Written Reflection:** take the next 10 minutes to reflect using the front page of the worksheet (we will work on the last question at the end of the meeting)
- **Sticker exercise:** during this time, also take 5 dot stickers and place them on the themes from your previous feedback that are still the most important to you
- We will use your thoughts from today and previous meetings to present a one-pager to Council
 - We will ask for your permission if we use any direct quotes

Pair discussion (10 min)

- Find a partner and discuss what has been most important to you about this plan
 - How is your partner's focus similar to yours? How is it different?
 - Is there something that you hope is brought forward to help support both of your viewpoints?

Large group discussion (20 min)

- Discuss questions on worksheet – each pair should share what they discussed
- Is there anything specific about the four areas you want to make sure Council considers during adoption?
 - Community drop-off depots, reuse and repair, organics, commercial transfer stations

Closing



Closing

- Public engagement
- Timeline for next steps and plan adoption
- Opportunity to provide testimony upon adoption of plan
- **Last thoughts:** On the back of the worksheet, please take a couple more minutes to write a sentence or two about what you would most like Council to remember or consider as this plan is adopted. This could be something you want to make sure isn't forgotten, something that means the most to you, etc.

Thank you.

oregonmetro.gov/systemfacilitiesplan

